



IMPROVING THE LIVES OF INDIVIDUALS, FAMILIES AND  
COMMUNITIES IN THE PACIFIC NORTHWEST

PRE-EVENT DRAFT

9.30.24 | HUB Ballroom | 9 AM - 4 PM

# INNOVATIONS IN ADDRESSING SUBSTANCE USE AND ADDICTION

---

UW Medicine  
DEPARTMENT OF PSYCHIATRY  
AND BEHAVIORAL SCIENCES

PRE-EVENT DRAFT

# INNOVATIONS IN ADDRESSING SUBSTANCE USE AND ADDICTION

IMPROVING THE LIVES OF INDIVIDUALS, FAMILIES AND  
COMMUNITIES IN THE PACIFIC NORTHWEST

9.30.24 | HUB Ballroom | 9 AM - 4 PM



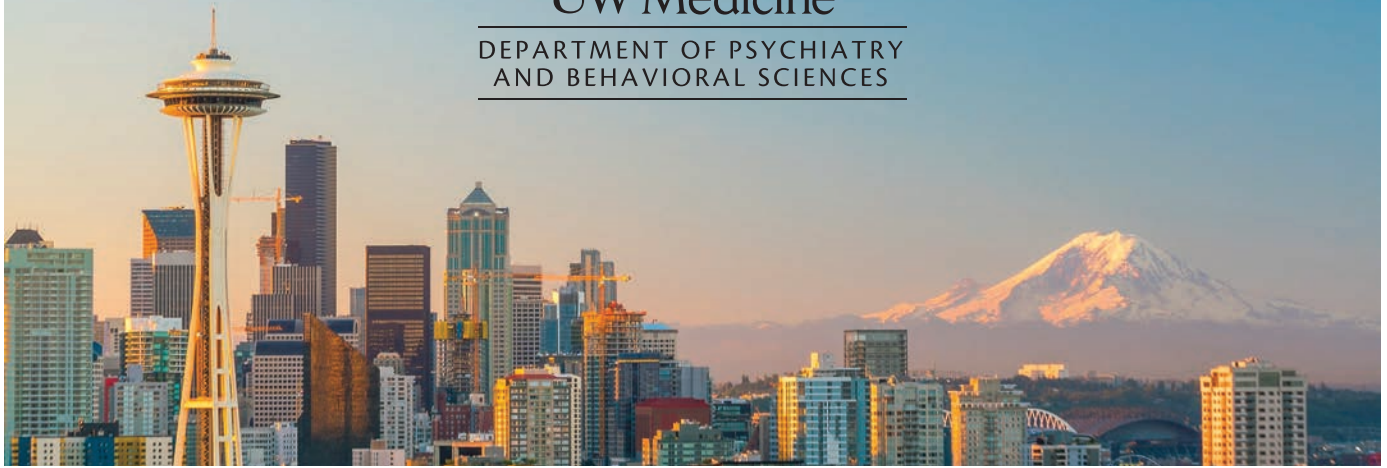
8:30 – 9:00 AM	<b>Registration and breakfast</b>
9 – 9:45 AM	<b>Welcome and introduction</b>  Jürgen Unützer, MD, MPH, MA Chair, Department of Psychiatry and Behavioral Sciences
9:45 – 10:45 AM	<b>Policy panel</b> <ul style="list-style-type: none"><li>• Lauren Davis, Representative 32nd Legislative District</li><li>• Reagan Dunn, Councilmember King County District 9</li><li>• Brad Finegood, Strategic Advisor to Seattle-King County Public Health</li><li>• Charissa Fotinos, Medicaid and Behavioral Health Medical Director, Health Care Authority</li><li>• Nicole Macri, Representative 43rd Legislative District</li><li>• Jim Vollendroff, WA State Liquor and Cannabis Board</li></ul>
10:45 – 11:00 AM	<b>Break - transition</b>
11 AM – 1 PM	<b>Event hall with lunch</b>
1 – 2 PM	<b>Questions and answers</b>  Audience questions will be collected throughout the event and answered live onstage by UW faculty
2 – 3 PM	<b>Round table discussions – Session 1</b>  Group discussion to join an opportunity to improve our communities. All topics are presented at each session.
3 – 4 PM	<b>Round table discussions – Session 2</b>  Group discussion to join an effort or tackle a challenge. All topics are presented at each session.

**Round table discussions led by:** Susan Ferguson, PhD; Jason Kilmer, PhD; Mark Duncan, MD; Norah Essali, MD; Marco Pravetoni, PhD; Caleb Banta-Green, PhD, MPH, MSW; Rashi Gupta, MPA, MA; Jonathan Buchholz, MD and Mary Larimer, PhD

**This event was made possible by generous philanthropic support.**

# UW Medicine

DEPARTMENT OF PSYCHIATRY  
AND BEHAVIORAL SCIENCES



## CLINICAL CARE

An integral part of the department's mission is that care for individuals and families with mental health and addiction becomes an essential part of all healthcare. We provide state-of-the-art patient care at more than a dozen UW Medicine facilities throughout Western Washington and expert psychiatric consultation to healthcare providers throughout the Pacific Northwest. Our faculty of expert psychologists and psychiatrists deliver a wide range of medical, psychological, and psychosocial approaches to help improve the lives of individuals and families of all ages who are living with addiction.



Est. 2018

# HARBORVIEW ADDICTION CONSULT SERVICE (ACS)

Elly Bhatraju, MD, MPH | Cat Jobes, RN | Matt Iles-Shih, MD, MPH

CLINICAL CARE

Supporting hospitalized patients and their clinical teams by providing a compassionate, evidence-based approach to substance use disorder evaluation, treatment and care-coordination.

## OVERVIEW

Substance use disorders (SUDs) are a significant cause of hospitalization and, if not compassionately addressed, can further complicate inpatient treatment. The ACS utilizes a spectrum of person-centered approaches to assist individuals who find their hospital medical care, and their lives more generally, impacted by SUDs. The team is composed of social workers, nurses, peer specialists, physicians, and an array of clinicians-in-training. In coordination with other teams, the ACS offers evaluation, harm reduction, medication-managed withdrawal, long-term pharmacotherapy-initiation, brief psychosocial interventions, and care coordination -- all with the goal of facilitating effective in-hospital treatment and a successful transition to the community.

## WE AIM TO

- Be sufficiently resourced to ensure that all patients interested in recovery or harm reduction can be seen and offered a spectrum of treatments and supports, even on evenings and weekends.
- Expand our team to include psychologists and pharmacists.
- Support other clinical teams through educational programming and resources.
- Build capacity for more timely screening, case-finding, and pro-active consultation.



“The addiction consult service strives to meet every person where they are at, creating human connection, reducing stigma while enhancing openness to growth, and promoting access to high quality, life-changing care.”

**Matt Iles-Shih, MD, MPH**  
Addiction Consult Service



Est. 2013

# OUTPATIENT PSYCHIATRY CLINIC ADDICTION TREATMENT

Mark Duncan, MD

Evaluation and management for co-occurring mental health disorders and substance use disorders in adults.

## OVERVIEW

The Outpatient Psychiatry Clinic on Roosevelt is a unique clinic that brings a wealth of clinical, educational, and research expertise to provide consultation and limited therapy and medication treatments for all substance use disorders from across the UW system. We also provide consultation around SUD treatment in pregnancy, and the use of psychedelic treatment for SUDs and mental health disorders. In addition to clinical care, the outpatient psychiatry clinic has developed educational opportunities for psychiatry residents around treating SUDs and small research projects to further the knowledge base around treating SUDs.

## WE AIM TO

- Continue to offer and expand access to expert consultation around co-occurring substance use disorders and mental health disorders.
- Develop a deeper and more robust educational experience for training around substance use disorders.
- Broaden our research efforts to improve the knowledge base around treating substance use disorders.



"The level and scope of expertise that the group of faculty psychiatrists and psychologists that work at the outpatient clinic now bring to treating SUDs and co-occurring mental health disorders is impressive. I look forward to seeing what this group of committed clinicians are able to develop in the years to come."

Mark Duncan, MD

[uwmedicine.org/locations/  
psychiatry-outpatient-uw-  
mc-roosevelt](http://uwmedicine.org/locations/psychiatry-outpatient-uw-mc-roosevelt)

Est. 2016

# PERINATAL PSYCHIATRY CONSULTATION LINE (PPCL)

Deb Cowley, MD: Medical Director | Amritha Bhat, MD, MPH: Co-Director | Nadejda Bespalova, MD: Perinatal Addictions Psychiatrist | Alicia Kerlee: Program Coordinator

CLINICAL CARE

A free perinatal psychiatry consultation line that WA state providers can call for recommendations about their pregnant and postpartum patients' mental health and co-occurring substance use.

## OVERVIEW

The Perinatal Psychiatry Consultation Line (Perinatal PCL), funded by the Washington State Health Care Authority, is a free provider-to-provider consultation line staffed by UW psychiatry faculty with expertise in perinatal behavioral health. Providers can receive consultations, recommendations, and referrals to community resources for perinatal patients with mood and co-occurring substance use disorders (including pregnant and postpartum patients and patients experiencing pregnancy loss and infertility).

### Topics may include:

1. Risks and benefits of psychiatric medications
2. Depression, anxiety, or other psychiatric disorders
3. Adjustment to pregnancy loss, complications, or difficult life events
4. Non-medication treatments

## WE AIM TO

- Educate providers about the use of psychiatric medications during pregnancy and postpartum.
- Increase providers' comfort with treating pregnant and postpartum patients' mental health and co-occurring substance use.
- Ensure that all pregnant and postpartum patients in Washington state receive high quality behavioral health care.



"Treating perinatal mental health problems is the closest we can come to universal prevention of mental health problems in the next generation."

Amritha Bhat, MD &  
Deb Cowley, MD  
Perinatal PCL CO-Directors

877-725-4666

[perc.psychiatry.uw.edu/perinatal-pcl](http://perc.psychiatry.uw.edu/perinatal-pcl)  
[ppcl@uw.edu](mailto:ppcl@uw.edu)

Est. 2024

# PSYCHEDELIC HARM REDUCTION CLINIC

Nathan Sackett, MD, MS: Director

Educating patients and providers who have questions about the clinical application of psychedelics and other experimental compounds to treat psychiatric conditions.

## OVERVIEW

We believe patient interest and demand for psychedelics as a potential therapeutic treatment outpaces current clinical evidence. To address this gap, the Psychedelic Harm Reduction Clinic uses an interdisciplinary team to provide psychoeducation, risk stratification and review current clinical studies to provide the most up to date clinical information to patients using a harm-reduction model of care. Many providers are also not able to stay up to date in this rapidly evolving field, and this clinic is meant to fill this gap.

## WE AIM TO

As a consultation clinic, a member of our clinical team will meet with a patient for two 60-minute sessions with an optional third visit. After a general psychiatric intake, topics of visits may include:

- Identified risk factors associated with psychedelic-use.
- Review harm-reduction strategies.
- Review psychotherapeutic approach to preparation and integration.
- Medications that may interact with psychedelics.
- Discuss current evidence as it relates to specific clinical questions.



"We bring together experts in medical education, harm reduction, psychiatry, and addiction medicine to better prepare clinicians for a world where psychedelics will certainly be increasingly used."

**Nathan Sackett, MD, MS**  
NTAP Director

[ntap.psychiatry.uw.edu](http://ntap.psychiatry.uw.edu)  
[ntap@uw.edu](mailto:ntap@uw.edu)



Est. 2019

# PSYCHIATRY CONSULTATION LINE (PCL)

Ryan Kimmel, MD: Medical Director | Mollie Forrester, MSW, LICSW: Program Director | Jonathan Buchholz, MD: Addictions Program Medical Director | Jennifer Magnani, MSW, LICSW: Assistant Program Director

CLINICAL CARE

Free mental health and substance use disorder consultations, including medications for opioid use disorders, to healthcare providers in Washington State.

## OVERVIEW

Nearly half of Washington counties have no practicing psychiatrist. The PCL aims to increase access to specialty mental health and substance use care by providing on-demand consultations to providers across the state, 24 hours/day.

## WE AIM TO

- Participate in the development of peer-reviewed algorithms and education for providers initiating buprenorphine in the era of Fentanyl abuse.
- Offer provider-to-provider phone consultations regarding complicated clinical situations in outpatient, inpatient, and Emergency Room settings.
- Focus on underserved populations and under-resourced locations in Washington.



“The UW PCL program expands the psychiatrist’s reach and will hopefully get a great many patients pointed in the right direction in terms of effective treatment.”

Jonathan Buchholz, MD  
Ryan Kimmel, MD  
PCL Medical Directors

877-927-7924

[pcl.psychiatry.uw.edu](http://pcl.psychiatry.uw.edu)  
[pclwa@uw.edu](mailto:pclwa@uw.edu)



*Dr. Richard Ries, an addiction specialist, is one of the UW faculty psychiatrists who covers the PCL.*

Est. 1983

# PSYCHOLOGY TRAINING IN ALCOHOL RESEARCH FELLOWSHIP (PTAR)

Mary Larimer, PhD: Professor, Director | Christine Lee, PhD: Professor, Associate Director

Training pre- and post-doctoral fellows for research careers addressing etiology, prevention and treatment of alcohol and substance use disorders.

## OVERVIEW

Our training includes didactic and experiential components, including mentoring from our highly regarded training faculty, to prepare trainees for an independent research career. Training integrates human and animal research incorporating bench-to-bedside and community perspectives to accelerate team science expertise to solve complex problems. Trainees actively participate as team members on faculty projects, receive instruction in research methods and statistical techniques as well as broad training addressing a range of relevant addiction research topics, develop independent projects with faculty mentoring and support, and complete formal training in grant writing and career development to ensure future success and grow the alcohol and substance use research workforce.

## WE AIM TO

- Expand our program to support additional trainees, especially those who are underrepresented in the scientific workforce.
- Increase support for mentoring to further ensure success.
- Continue to encourage applications from individuals of all genders, backgrounds and abilities.
- Continue fostering a welcoming community that celebrates and supports diversity.
- Continue to place trainees into research positions in the alcohol and substance use field following completion of their training.
- Add components to better support undergraduate and post-baccalaureate research trainees.



“The T32 supports unique training opportunities not offered at other institutions, which create a strong foundation for our future careers. So many successful addictions researchers have come out of this program and I’m lucky to be joining their ranks!”

**Jessica Canning, PhD**  
Postdoctoral Fellow, CSHRB

[sites.uw.edu/cshrb/training-opportunities](https://sites.uw.edu/cshrb/training-opportunities)  
cshrb@uw.edu

Est. 2018

# VA PUGET SOUND ADDICTION CONSULT AND WITHDRAWAL MANAGEMENT SERVICE

Jonathan Buchholz, MD: Director

CLINICAL CARE

Helping patients experiencing SUD on acute care services through expert assessments, medical management, motivational engagement and referral to outpatient treatment.

## OVERVIEW

Substance use disorder (SUD) is common amongst acutely hospitalized patients and contributes significantly to morbidity and mortality. It is widely recognized that addiction consultation services improve chances for patients to achieve recovery. Our goal is to engage people in their recovery goals using motivational enhancement techniques, evidence based medical interventions, and coordination of care following hospitalization. Our secondary mission is to improve medical education of SUD at the VA and UW through direct education of learners across the spectrum, from medical students to advanced fellows. Advocacy for compassionate and expert level care for these patients reduces stigma for patients and improves satisfaction amongst providers.

## WE AIM TO

- Expand trainee involvement across multiple GME programs.
- Expand educational resources for colleagues on medical, surgical, and specialty hospital care services.
- Continue providing the service with adequate attending coverage for consistent availability for patients and acute care services.



“Our service aims to give every patient experiencing SUD hospitalized at the VA Puget Sound an opportunity to meet with a physician who can provide expert level addiction consultation with compassion and respect.”

Jonathan Buchholz, MD  
Director



# VA PUGET SOUND ADDICTION TREATMENT CENTER (ATC)

Joe Reoux, MD: Medical Director | Carolyn Willbanks LICSW: Director

Providing individualized comprehensive care for eligible military veterans with substance use disorders and addressing concerns about their substance use.

## OVERVIEW

The Addiction Treatment Center (ATC) is a subspecialty mental health outpatient clinic at VA Puget Sound offering individualized treatment plans that may incorporate group and individual counseling, evidenced-based psychotherapies, medication, an intensive outpatient program, contingency management, and other support from a team of psychiatrists, psychologists, social workers, nurses, and chaplains to help eligible military Veterans reach their goals related to substance abstinence, moderation, or harm reduction. ATC is a training site for substance use disorder treatment for several medical and mental health related training programs. Opportunities to participate in research studies also exist.

## WE AIM TO

- Reduce suffering and provide superior patient-centered treatment with respect and compassion in partnership with the person seeking care.
- Collaborate with providers across the VA network to improve access to treatment, decrease barriers and stigma, and advocate for improved services.
- Educate and train providers in state of the art treatment and research for substance use disorders.

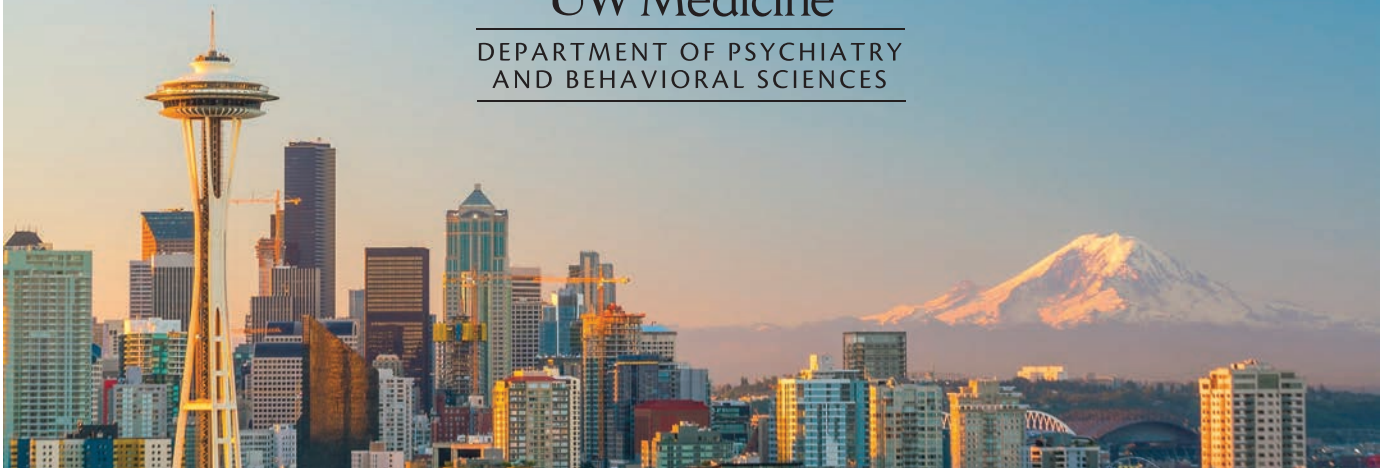


## MISSION

Providing compassionate care and instilling hope in recovery.

206-277-3318

[va.gov/puget-sound-health-care/locations/seattle-va-medical-center/](https://va.gov/puget-sound-health-care/locations/seattle-va-medical-center/)



## RESEARCH

Our researchers are making tremendous progress in understanding, preventing, and treating substance use disorders and addiction. We work to create more effective, efficient, and patient-centered interventions for complex mental health conditions and addiction and we work with community partners to disseminate and implement discoveries from our labs and clinics in diverse practice settings to help people lead more fulfilling lives.

Our work spans the translational science spectrum. This includes science to identify neural mechanisms and to test novel therapeutics, clinical implementation of research in communities, schools, and healthcare settings, as well as health services and health policy research. We are committed to participatory research in partnerships with community members to ensure that our research is person-centered and meets the needs of community collaborators. Our research teams are interdisciplinary and seek to find effective solutions for diverse individuals, families,

and communities. We are also proud of our shared passion for and commitment to training and inspiring the next generation of clinicians and research scientists.





Est. 1973

ADDICTIONS, DRUG &  
ALCOHOL INSTITUTE  
est. 1973

RESEARCH

# ADDICTIONS, DRUG & ALCOHOL INSTITUTE (ADAI)

Susan Ferguson, PhD: Director

A multidisciplinary group of centers and programs that work to improve our understanding and reduce the harm caused by substance use and substance use disorders.

## OVERVIEW

ADAI's centers and programs include:

- ADAI Clearinghouse
- ADAI Small Grants Program
- Cannabis Education and Research Program (CERP)
- Center for Advancing Addiction Health Services (CAAHS)
- Center for Community-Engaged Drug Education, Epidemiology and Research (CEDEER)
- Center for Substance-Affected Person, Pregnancy & Health Intervention Research & Education (SAPPHIRE)
- Clinical Trials Consultation and Technical Assistance Program (C-TAP)
- Clinical Trials Network (CTN)

The Small Grants Program awards funds to UW researchers for pilot studies and developmental research with scopes ranging from pharmacology of drugs to studies of clinical treatment strategies, prevention, and social policy issues.

Information about other ADAI centers and programs may be found throughout this publication.

## WE AIM TO

- Increase educational and training opportunities to bolster interest in substance use research, policy, and practice.
- Expand initiatives to address stigma to prevent and reduce harm.
- Expand research efforts to address emerging issues related to substance use.



"A major strength of ADAI is the broad expertise that is found within our interdisciplinary teams, which allows us to identify and implement innovative solutions for addressing substance use and substance use disorders."

Susan Ferguson, PhD  
ADAI Director

adai.uw.edu  
adai@uw.edu

Est. 2015

# BRiTE CENTER

Dror Ben-Zeev, PhD: Director

RESEARCH

The School of Medicine's flagship center for technology and mental health.

## OVERVIEW

Housed at the University of Washington's School of Medicine, the BRiTE Center brings together a diverse group of researchers, clinicians, technologists, patients and mental health advocates with a common goal of improving the lives of those suffering with mental illness, their families, and communities. Harnessing the Pacific Northwest's innovative spirit, we work with industry, healthcare systems large and small, and individuals invested in developing creative technologies to improve population mental health, in our lifetime.

## WE AIM TO

- Develop, test, and implement innovative digital interventions to help people with mental health and substance use disorders.
- Harness technological innovations including machine learning, artificial intelligence, and natural language processing to advance mental health and substance use disorder services.
- Leverage widespread use of devices including smartphones and electronic health record systems to help make effective interventions for mental health and substance use disorders ubiquitous.



Dror Ben-Zeev, PhD  
BRiTE Center Director



[brite.uw.edu](http://brite.uw.edu)  
[dbenzeev@uw.edu](mailto:dbenzeev@uw.edu)

Est. 2013


 ADDICTIONS, DRUG &  
 ALCOHOL INSTITUTE  
 est. 1973

# CANNABIS EDUCATION & RESEARCH PROGRAM (CERP)

Beatriz Carlini, PhD, MPH: Director

A multidisciplinary research program that aims to advance public health and safety in the context of legalized cannabis in Washington State.

## OVERVIEW

CERP collaborates with fellow researchers within the University of Washington, state agencies and beyond to explore the impact of cannabis legalization. Research findings are published in peer-reviewed journals and shared with state and local agencies, as well as legislators, to help them make informed decisions about policies and prioritize their work based on community need. As an ongoing effort to provide our community with science-based education and information resources, we maintain a website and have created several targeted online trainings for the WA State Recovery Helpline, medical clinicians, and the community. CERP also organizes a cannabis symposium every other year, bringing national and international experts together to share the latest scientific discoveries with WA decision makers, researchers, community organizations and clinicians.

## WE AIM TO

- Use existing data to describe the impacts of cannabis use on individuals accessing care for adverse events in WA state healthcare systems.
- Conduct a clinician needs assessment to better understand beliefs and practices related to cannabis related to intervening in adverse events in emergency, pediatric, and behavioral health settings.
- Collaborate across university departments to develop and test clinical tools to reduce risk for people with psychotic disorder diagnoses who use cannabis.



"The people of Washington State decided to end cannabis prohibition in 2012, in hopes of correcting the wrongs brought on by policies that disproportionately imprisoned people of color and fueled stigmatization and discrimination against people who consume cannabis. ADAI CERP conducts research that informs policies, practices and regulations that ensures that the spirit of cannabis legalization is honored and alive."

Bia Carlini, PhD, MPH  
 CERP Director

[adai.uw.edu/cerp](http://adai.uw.edu/cerp)  
[adai@uw.edu](mailto:adai@uw.edu)



CERP Team.



Est. 2022



ADDICTIONS, DRUG &  
ALCOHOL INSTITUTE  
est. 1973

# CENTER FOR COMMUNITY- ENGAGED DRUG EDUCATION, EPIDEMIOLOGY & RESEARCH (CEDEER)

Caleb Banta-Green, PhD, MPH, MSW: Research Associate Professor

RESEARCH

Conducting real world, person-centered research utilizing quantitative and qualitative research methods.

## OVERVIEW

We join research with the “real-world” to generate innovative, evidence-based, and person-centered responses to the use of opioids, stimulants and other illicit substances. Our goal is to collect and share knowledge gained from research, local data, clinical expertise, and personal lived experiences of people who use drugs. We utilize multiple research approaches including clinical trials, quasi-experimental study designs, qualitative methods, and epidemiology.

## WE AIM TO

- Continue to improve our processes to meaningfully and genuinely center the voices of people who use drugs as we conduct research.
- Continue to refine our use of multiple research methods to gain robust insights into substance use care needs and the impact of new interventions.
- Build and test more comprehensive packages of care services for people who use drugs that incorporate health care, treatment, and harm reduction services.



“I’m really proud to have helped launch the Youth Opioid Use Disorder Study which aims to understand the experience of young people in treatment, how to better engage them and provide acceptable care options. The study team is highly collaborative and rock star caliber, and the range of perspectives has made the work very rewarding.”

Anthony Floyd, PhD  
Research Associate Professor

[adai.uw.edu/cedeer](http://adai.uw.edu/cedeer)  
[calebbg@uw.edu](mailto:calebbg@uw.edu)

Est. 2022

# CENTER FOR MEDICATION DEVELOPMENT FOR SUBSTANCE USE DISORDERS AND OVERDOSE

Marco Pravetoni, PhD: Director

Developing vaccines and antibody-based strategies to counteract opioid use disorders and fatal overdose.

## OVERVIEW

The Pravetoni group focuses on development and translation of medical interventions against substance use disorders (SUD) and other chemical and biological threats. Current efforts are: 1) vaccines, monoclonal antibodies (mAb), and small molecules to treat or prevent SUD, opioid use disorders (OUD) and overdose, 2) mechanisms and biomarkers underlying or predicting efficacy of immunotherapeutics and medications in pre-clinical models of SUD and OUD patients, 3) novel strategies to enhance vaccine or medication efficacy, including immunomodulators, small molecules, adjuvants, nanoparticles, polymers and other delivery platforms, 4) Vaccines, mAb, and clinical biomarkers against infectious diseases (e.g., *Pseudomonas aeruginosa* and novel coronavirus SARS-CoV-2), 5) biosensors for field detection or diagnosis.

## WE AIM TO

- Develop vaccines and antibody-based strategies to counteract opioid use disorders.
- Reduce the number of fatalities resulting from opiate overdoses and other chemical or biological threats.
- Develop novel strategies to enhance vaccine or medication efficacy, including immunomodulators, small molecules, adjuvants, nanoparticles, polymers and other delivery platforms.



“Antibodies produced via active immunization with an anti-opioid vaccine sequester opioid in the blood and prevent it from crossing the blood-brain barrier. This, in turn, attenuates opioid-induced effects associated with misuse and overdose.”

Marco Pravetoni, PhD  
Director

[mprave@uw.edu](mailto:mprave@uw.edu)



Est. 2001

# CENTER FOR THE NEUROBIOLOGY OF ADDICTION, PAIN & EMOTION (NAPE)

Charles Chavkin, PhD: Director (Allan & Phyllis Treuer Chair of Pain Research and Professor of Pharmacology)

RESEARCH

Advancing the understanding of drug addiction by defining the underlying molecular, cellular and neural circuit mechanisms in the brain.

## OVERVIEW

The UW Center for the Neurobiology of Addiction, Pain and Emotion (NAPE) brings together faculty and trainees from over 30 laboratories in multiple departments, schools and colleges at UW, Seattle Children's Reserach Institute, and the Seattle VA. Its principal mission is to foster research collaborations and coordinated training to develop and apply cutting-edge technologies that facilitate the exploration of neural circuits and their impact on motivated behavior and mental health. Through collaborative research, workshops, coordinated URM outreach efforts, and multiple training programs for students and fellows, NAPE provides shared resources to the scientific community and supports the next generation of scientists.

## WE AIM TO

- Continue developing and applying advanced technologies to understand neural circuits involved in opioid and psychostimulant addiction.
- Foster collaboration across labs, offer specialized trainings and professional development, and expand national and international collaborative research efforts.
- Fund pilot projects that explore new hypotheses and develop novel tools.



"The NAPE Center unites investigators to develop and apply cutting-edge technologies, providing essential training and resources to advance opioid research. We aim to improve lives by understanding the neurobiology of addiction, pain, and emotion."

Charles Chavkin, PhD  
NAPE Director

[depts.washington.edu/  
uwnape](https://depts.washington.edu/uwnape)  
[napecenter@uw.edu](mailto:napecenter@uw.edu)



Est. 2022

# CENTER FOR NOVEL THERAPEUTICS IN ADDICTION PSYCHIATRY (NTAP)

Nathan Sackett, MD, MS: Director

Investigating how novel therapeutics, including psychedelic compounds, when paired thoughtfully with behavioral treatment, can accelerate healing for people struggling with addiction.

## OVERVIEW

The mission of the Center for Novel Therapeutics in Addiction Psychiatry is to create powerful new ways of treating people struggling with alcohol, opioid, tobacco and other addictions by combining novel therapeutics, including psychedelic compounds, with evidence-based behavioral interventions.

Addiction continues to ravage our community and there is an urgent need for innovative and effective treatment options for those impacted by substance use disorders. Promising studies suggest the efficacy of psychedelics when paired with therapy, but more data is needed. Our Center seeks to accelerate the process so more people can get the help they need.

## WE AIM TO

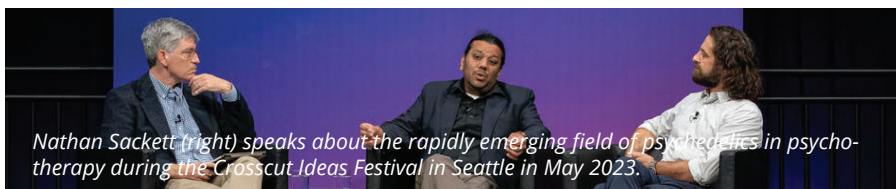
- Improve the understanding of the safety and efficacy of psychedelic compounds for individuals with addiction and other mental health problems.
- Conduct clinical trials to identify the best pairings of novel compounds and behavioral interventions to treat a variety of substance use disorders.
- Develop a standardized training program for clinicians and therapists who want to incorporate the safe and effective use of these treatments into practice.



“It’s important to explore all options to potentially help people. Novel therapeutics, including psychedelic compounds, from the data that’s available, shows a lot of promise for some of the pathologies that we’ve had very limited success in treating.”

Nathan Sackett, MD, MS  
NTAP Director

[ntap.psychiatry.uw.edu](http://ntap.psychiatry.uw.edu)  
[ntap@uw.edu](mailto:ntap@uw.edu)



Nathan Sackett (right) speaks about the rapidly emerging field of psychedelics in psychotherapy during the Crosscut Ideas Festival in Seattle in May 2023.

Est. 2000

# CENTER FOR THE STUDY OF HEALTH & RISK BEHAVIORS (CSHRB)

Mary E. Larimer, PhD: Director | Christine Lee, PhD: Associate Director

RESEARCH

Reducing harm from addictive and health risk behaviors and improving the health of all people through research, training, practice and policy initiatives.

## OVERVIEW

Our interdisciplinary team of scientists is committed to addressing pressing public health concerns regarding addictive and health risk behaviors including alcohol, cannabis, and other substance use, risky sex and sexual assault, gambling, vaccine uptake, and more. We use a multi-level framework incorporating individual, family, social network, community, and policy-level predictors to understand the “how and why” of these behaviors and develop and test novel prevention and intervention approaches with real world impact. We partner with diverse communities and organizations to design and implement research and translate findings to practice. We also train the next generation of researchers, educators, clinicians, and policymakers.

## WE AIM TO

- Expand support for early-career researchers and early-stage research initiatives (e.g., pilot studies) to provide a critical bridge to the next generation of addiction and health risk research.
- Expand partnerships with diverse and underserved communities, including rural communities, to broaden our impact.
- Build greater understanding of causes and consequences of addiction and health risk behaviors to better inform interventions to reach a wide audience.
- Expand outreach in prevention, intervention, treatment, and policy domains to clinicians, policymakers, and the public.



“The dedicated team at CSHRB is driven by a passion for improving lives. Our research not only seeks to prevent or reduce the harms of substance use and risky behaviors, but also empower individuals toward healthier, brighter futures.”

Mary Larimer, PhD  
CSHRB Director

[sites.uw.edu/csrb](https://sites.uw.edu/csrb)  
[csrb@uw.edu](mailto:csrb@uw.edu)



CSHRB faculty, staff, and trainees gather for a strategic planning retreat



Est. 2019

RESEARCH

# CENTER FOR SUICIDE PREVENTION & RECOVERY (CSPAR)

Kate Comtois, PhD, MPH: Director | Juliann Salisbury, MSW, LSWAA: Manager | Rick Ries, MD: Medical Director | Jeffrey C. Sung, MD; Molly Adrian, PhD; Elizabeth McCauley, PhD: Core Faculty

Creating an environment where patients experiencing suicidality, their families, and clinicians feel supported in finding a way forward.

## OVERVIEW

CSPAR conducts research on suicide prevention and recovery, provides training to clinicians on evidence-based interventions for individuals with suicidal thoughts and behaviors, and offers customized consulting to organizations implementing a suicide care pathway. CSPAR offers live training, self-directed courses, monthly research talks, and a wide range of tools and resources to improve suicide care.

## WE AIM TO

- Develop and scale interventions that not only resolve suicidality but do so in ways that bring patients experiencing suicidal thoughts and behaviors, their families, and clinicians together and increase everyone's connection, hope, and self-efficacy.
- Conduct studies to ask new questions with existing data or conduct rigorous trials and studies on how to fully scale high quality suicide care.
- Start new programs to establish innovative programs that are co-designed by researchers, clinicians and patients; bring CSPAR interventions to new settings.
- Implement innovative trainings through online learning communities, culturally relevant training, training on suicide care for families of suicidal patients.
- Promote careers of post-baccalaureate and postdoctoral trainees with diverse backgrounds in the CSPAR approach.



Kate Comtois, PhD, MPH  
CSPAR Director

[uwcspar.org](http://uwcspar.org)  
[uwcspar@uw.edu](mailto:uwcspar@uw.edu)



Est. 2023



ADDICTIONS, DRUG & ALCOHOL INSTITUTE  
est. 1973

# CLINICAL TRIALS CONSULTATION AND TECHNICAL ASSISTANCE PROGRAM (C-TAP)

Mary Hatch, PhD: Director | Sharon Garrett, MPH: Research Scientist | Brenda Stuvek, BS: Project Manager

RESEARCH

Consultation service to help clinician investigators with clinical research design, implementation and dissemination.

## OVERVIEW

C-TAP is a pilot program funded by the Department of Psychiatry & Behavioral Sciences intended to foster the development of clinical scientists within the department. The service is open to investigators at all levels, including trainees, early career investigators, seasoned clinicians or researchers new to community-facing clinical research. The C-TAP team consists of faculty, research scientists, coordinators, and a fiscal operations administrator who offer project-specific consultations.

## WE AIM TO PROVIDE

- Technical assistance from experienced principal investigators and project directors.
- Coaching, training, or other hands-on assistance at any phase of a trial, from planning to implementation to dissemination. We provide support from a range of experts who can answer questions and help troubleshoot your project.
- Consultation, which is different from collaboration or research mentorship.

“C-TAP is able to give both high-level and granular perspective. Able to address very concrete details.”

### Anonymous

Evaluation survey respondent

C-TAP Team: Mary Hatch, PhD; Sharon Garrett, MPH; Brenda Stuvek, BS; Tanja Laschober, PhD



[adai.uw.edu/ctap](http://adai.uw.edu/ctap)  
[ctap@uw.edu](mailto:ctap@uw.edu)





Est. 2019

RESEARCH

# COLLABORATING TO HEAL OPIOID ADDICTION AND MENTAL HEALTH IN PRIMARY CARE (CHAMP)

Lori Ferro, MHA, PMP: Sr. Research Project Manager | John Fortney, PhD; Anna Ratzliff MD, PhD; Andrew Saxon, MD: Principal Investigators

A real-world clinical trial sponsored by NIMH to test whether Collaborative Care that addresses both mental health disorders and co-occurring opioid use disorder can improve patient lives.

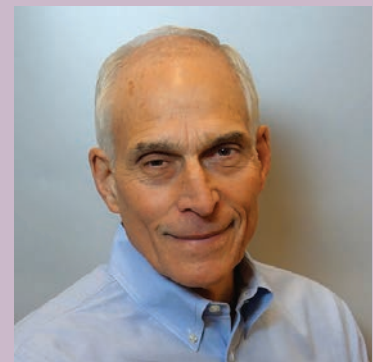
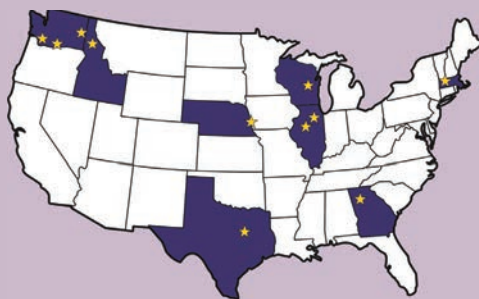
## OVERVIEW

Collaborating to Heal Addiction and Mental Health in Primary care is a real-world clinical trial sponsored by the National Institute of Mental Health (NIMH) through the Helping to End Addiction Long-term Initiative, or HEAL Initiative. This study is conducted by the Department of Psychiatry and Behavioral Sciences, Division of Population Health and the AIMS Center. The purpose of this trial was to test whether Collaborative Care (CoCM) that addresses both mental health disorders (MHD) and co-occurring opioid use disorder (OUD) can improve patient lives. This trial also examined the effectiveness of screening for Opioid Use Disorder (OUD) and effectiveness of high or low sustainment support.

## WE AIM TO

- Continue research on best practices to implement CoCM for co-occurring disorders in primary care.
- Continue to research feasible and cost-efficient ways to implement research in primary care.
- Continue to research most effective sustainment activities for CoCM for co-occurring disorders.

### CHAMP LOCATIONS



"To address the opioid epidemic we need to find innovative ways to treat opioid use disorder in primary care."

**Andrew Saxon, MD**  
CHAMP Principal Investigator

[champ.psychiatry.uw.edu](http://champ.psychiatry.uw.edu)  
[ljf9@uw.edu](mailto:ljf9@uw.edu)

Est. 1974



ADDICTIONS, DRUG &  
ALCOHOL INSTITUTE  
est. 1973

# FETAL ALCOHOL & DRUG UNIT (FADU)

Susan Stoner, PhD: Director

RESEARCH

One of the premier research centers on fetal alcohol spectrum disorders in adults.

## OVERVIEW

Founded by Dr. Ann Streissguth in 1974, FADU studies the impact of prenatal alcohol exposure in adulthood, disseminates research on fetal alcohol spectrum disorders (FASD), and seeks to prevent prenatal substance exposure. FADU is part of the ADAI Center for Substance-Affected Person, Pregnancy & Health Intervention Research & Education (SAPPHIRE).

## WE AIM TO

- Conduct longitudinal research with individuals with and without prenatal alcohol exposure.
- Build the evidence base on FASD across the lifespan, with an emphasis on middle age and beyond.
- Maintain interdisciplinary collaborations with other researchers with complementary research aims.
- Develop evidence-based interventions for individuals with prenatal substance exposure.



“As the director of FADU, I am deeply honored to advance the research legacy of Dr. Ann Streissguth and build upon her ground-breaking foundational work on prenatal alcohol exposure.”

Susan Stoner, PhD  
FADU Director

[fadu.psychiatry.uw.edu](mailto:team-fadu@uw.edu)  
[team-fadu@uw.edu](mailto:team-fadu@uw.edu)

Est. 2019

Garvey Institute for  
Brain Health Solutions

UW Medicine

# GARVEY INSTITUTE FOR BRAIN HEALTH SOLUTIONS (GIBHS)

Jürgen Unützer, MD, MPH, MA: Director

Working to treat and prevent disabling brain disorders from birth through old age.

## OVERVIEW

The Garvey Institute for Brain Health Solutions supports a dynamic community of clinicians, researchers, educators, patients, families and communities in tackling one of the biggest challenges of our generation — the personal, medical and societal burden of brain disorders. Our mission is to develop, test and rapidly deploy innovative approaches to prevent and treat brain health and mental health problems such as anxiety, depression, schizophrenia, addiction, dementia, and suicide that rob millions of individuals of the opportunity to lead healthy and productive lives. The Institute was launched with a \$50 million gift from community philanthropists Mike and Lynn Garvey.

## PROGRAM GOALS

- Discover new ways to prevent and treat brain health problems that now affect millions of individuals.
- Help patients who are struggling with devastating and disabling brain health conditions.
- Increase the reach of currently available clinical programs by enabling more efficient and effective delivery of healthcare.
- Attract, support and inspire the next generation of mental health clinicians and scientists.



“The Garvey’s gift is helping us improve brain health for our region and for the world. We are taking new approaches to solving difficult problems, not just doing more of the same.”

Jürgen Unützer, MD, MPH, MA  
GIBHS Director

[gibhs.psychiatry.uw.edu](http://gibhs.psychiatry.uw.edu)  
[gibhs@uw.edu](mailto:gibhs@uw.edu)



Garvey Institute for  
Brain Health Solutions

Working to improve the health of

Jürgen Unützer, Lynn Garvey,  
Denise Tabbutt and Mike  
Garvey at the Garvey Institute  
Annual Meeting in 2023.



Est. 2010



# HARM REDUCTION RESEARCH AND TREATMENT CENTER (HaRRT)

Susan Collins, PhD & Seema Clifasefi, PhD, MSW: Co-Directors

RESEARCH

Reducing substance-related harm, strengthening communities and improving lives.

## OVERVIEW

At the HaRRT Center we work collaboratively with people who use substances, community members and organizations to develop, conduct, evaluate and disseminate evidence-based interventions that help to reduce substance-related harm, improve quality of life, and promote social justice and racial equity for affected individuals and their communities.

## WE AIM TO

- Build a toolbox of harm reduction interventions that can be applied across various settings and populations.
- Inform policy with our harm reduction research.
- Disseminate harm reduction treatment to other health and social service providers.
- Increase implementation of our HaRRT model across UW medicine.

HaRRT Center team representing at Overdose Awareness Day 2024



Susan Collins, PhD & Seema Clifasefi, PhD  
HaRRT CO-Directors



“How do you put into words the power of being given one’s voice? The satisfaction of having addressed a situation within a community. The camaraderie, the brotherhood, the sense of belonging.”

Joe Stanton  
(in memorium)

[depts.washington.edu/hartlab](https://depts.washington.edu/hartlab)  
[hartlab@uw.edu](mailto:hartlab@uw.edu)

Est. 2022

# PERINATAL MENTAL HEALTH & SUBSTANCE USE EDUCATION, RESEARCH & CLINICAL CONSULTATION CENTER (PERC)

Amritha Bhat, MD, MPH & Deborah Cowley, MD: Co-Directors

Transforming perinatal mental health and substance use delivery systems through excellence in clinical consultation, education and health services research.

## OVERVIEW

The PERC Center is dedicated to transforming perinatal (pregnancy and up through one year postpartum) mental health and substance use delivery systems through excellence in clinical consultation, education, and health services research.

## WE AIM TO

- Provide accessible, affordable, and high-quality perinatal mental health and substance use clinical care and consultation.
- Collaborate with interdisciplinary and community partners.
- Conduct evidence-based care and research.
- Promote health equity and culturally sensitive mental health and substance use care.
- Promote dyadic approaches to mental health and substance use disorder (SUD) care.



“Treating perinatal mental health problems is the closest we can come to universal prevention of mental health problems in the next generation.”

Amritha Bhat, MD, MPH  
& Deb Cowley, MD  
Perinatal PCL CO-Directors

[perc.psychiatry.uw.edu](http://perc.psychiatry.uw.edu)  
[mcmh@uw.edu](mailto:mcmh@uw.edu)



Est. 2001



ADDICTIONS, DRUG &  
ALCOHOL INSTITUTE  
est. 1973

# PNW NODE, NATIONAL DRUG ABUSE TREATMENT CLINICAL TRIALS NETWORK (CTN)

Mary Hatch, PhD & John Roll, PhD: Principal Investigators

RESEARCH

Bridging the gap between research and practice to improve treatment for people with substance use disorder.

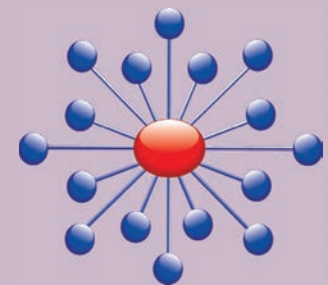
## OVERVIEW

The CTN PNW Node, co-led by University of Washington and Washington State University, is one of 16 nodes funded by the National Institute on Drug Abuse (NIDA). It supports research collaborations between the UW Addictions, Drug & Alcohol Institute, WSU, and affiliated community partners across Washington, California, and Alaska. CTN research studies are conducted at community clinical sites. Studies include behavioral interventions, medication trials, implementation studies, and interventions tailored to specific populations. We also house the CTN Dissemination Library, a digital library of journal articles and other publications created by and about the work of the NIDA CTN.

## WE AIM TO

- Elevate community voices to improve research in the areas community members think are worthwhile.
- Conduct bi-directional, multi-site treatment studies focused on effectiveness, done in community-based settings, with diverse patient populations.
- Transfer research results to physicians, clinicians, providers, patients, decision makers, and the wider community.

*Node Project Directors and QA Team*



“If there ever was an evidence-based practice used to treat SUD, it’s probably been tested in the CTN.”

**Michelle Peavy, PhD**  
Clinical Psychologist, WSU

[adai.uw.edu/ctn-pnnode](http://adai.uw.edu/ctn-pnnode)  
[adai@uw.edu](mailto:adai@uw.edu)

Est. 2016

RESEARCH

# SEVEN DIRECTIONS CENTER FOR INDIGENOUS PUBLIC HEALTH

Myra Parker, JD, MPH, PhD: Director

A public health institute committed to the health & wellness of Indigenous communities.

## OVERVIEW

Seven Directions was founded in 2016 as the first national public health institute in the United States to focus solely on Indigenous health and wellness. Our mission is to advance American Indian and Alaska Native health and wellness by honoring Indigenous knowledge, strengthening Tribal and Urban Indian public health systems, and cultivating innovation and collaboration. We provide technical assistance, trainings and conferences, research-based toolkits for practitioners, facilitated communities of practice, and translational and community based research projects to support tribal public health systems and the communities they serve.

## WE AIM TO

- Continue serving as a trusted resource and convenor among our tribal public health partners.
- Support research capacity building efforts among tribal public health programs.

## EXAMPLE PROJECT

GATHER: Growing a Tribal Healing Effort Through Research (MPIs Myra Parker & Maya Magarati)

GATHER's goal is to substantively build research capacity and provide instrumental research support to tribally led overdose, substance use, mental health, and pain research projects. GATHER aims to improve the health and wellbeing of American Indian and Alaska Native populations through fostering and growing Indigenous approaches to substance use research.



[indigenouphi.org](http://indigenouphi.org)  
[indigenouphi@uw.edu](mailto:indigenouphi@uw.edu)

Members of the Seven Directions team at our Our Nations, Our Journeys conference in 2023

Est. 2015

# TRAUMA RECOVERY & RESILIENCE INNOVATIONS PROGRAM (TRI)

Michele Bedard-Gilligan, PhD: Co-Director | Kristen Lindgren, PhD: Co-Director

RESEARCH

Developing, testing and disseminating effective strategies and interventions to promote mental health recovery following traumatic events.

## OVERVIEW

TRI is comprised of faculty, staff, and trainees who seek to better understand the mental health consequences of traumatic events, including problematic substance use. We develop, refine, test, and disseminate interventions that are based on scientific theory, are mechanistically targeted, and are culturally mindful. Our mission is to promote recovery, healing, and well-being in those directly impacted by trauma and to support providers and loved ones of trauma survivors. Our work includes federally funded, state funded, and locally funded research studies and contracts. Our projects range from clinical trials, local, national, and international trainings for specialty and non-specialty providers, and mentoring of undergraduate and graduate students, research staff, and postdoctoral fellows.

## WE AIM TO

- Build on existing studies that show low burden, light touch interventions can be effective in promoting recovery and reducing substance misuse following traumatic and stressful events
- Collaborate on studies that test interventions for trauma recovery in diverse settings to increase accessibility
- Partner with local, regional, national, and international organizations to train providers on the most effective strategies for working with trauma survivors to positively impact recovery trajectories



Michele Bedard-Gilligan, PhD  
Kristen Lindgren, PhD  
TRI Co-Directors

uwtri.org  
triheal@uw.edu



Est. 1996

# VETERANS INTEGRATED SERVICE NETWORK (VISN 20) NORTHWEST MIRECC

Murray Raskind, MD: Director | Elaine Peskind, MD: Co-Director | Benjamin Morasco, PhD & Maya O'Neil, PhD: Associate Directors of Education | Jeffrey J. Iliff, PhD & Miranda M. Lim, MD, PhD: Associate Directors of Research

Understanding the neurobiology of and developing novel treatments for the unseen wounds of war.

## OVERVIEW

The Veterans Integrated Service Network (VISN 20) Northwest Mental Illness Research, Education, and Clinical Center (NW MIRECC) mission is to understand the neurobiology of and develop novel treatments for the “unseen wounds of war”: posttraumatic stress (PTSD), blast mild traumatic brain injury (mTBI), and their common comorbidities. These PTSD and mTBI comorbidities include alcohol use disorder, chronic pain (chronic postconcussive headache), cognitive impairment, and increased risk for neurodegenerative disorders such as chronic traumatic encephalopathy (CTE) and Alzheimer’s disease.



VA Puget Sound Health Care System (VAPSHCS) was commissioned by Congress and the VA as one of the first three Mental Illness Research, Education, and Clinical Centers (MIRECCs) in the United States.

## PROGRAM GOALS

VA MIRECC aims to improve the provision of health-care services to veterans suffering from mental illness through:

- The conduct of research (including research on improving mental health delivery service facilities).
- The education and training of health care personnel.
- The development of improved models and systems for the furnishing of mental health services.

[mirecc.va.gov/visn20](http://mirecc.va.gov/visn20)  
[visn20mirecc@va.gov](mailto:visn20mirecc@va.gov)

# UW Medicine

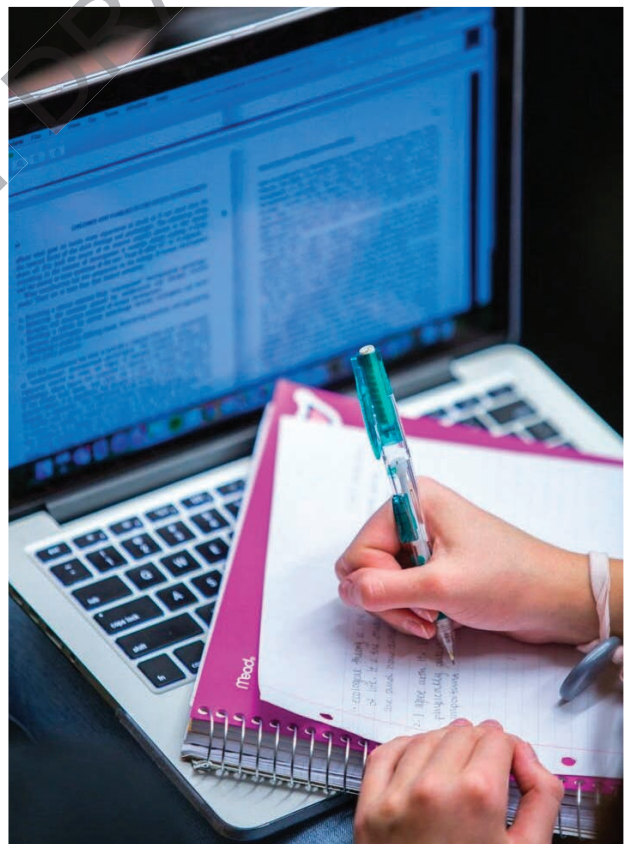
DEPARTMENT OF PSYCHIATRY  
AND BEHAVIORAL SCIENCES



## EDUCATION

Our educational programs provide state-of-the-art training in evidence-based diagnostic and therapeutic approaches for severe mental health conditions and addiction. We prepare clinicians to provide compassionate, patient-centered care, we train scientific investigators to advance knowledge that makes real-world impact, and we encourage innovations in teaching while fostering intellectual curiosity, a spirit of scientific inquiry, and the pursuit of lifelong scholarship.

We offer training in substance use and addiction psychiatry for medical students, graduate and postdoctoral students, residents in psychology, psychiatry, and subspecialty fellows. We also provide a robust offering of community education and consultation to healthcare providers throughout the WWAMI region (Washington, Wyoming, Alaska, Montana, and Idaho).





Est. 1973


 ADDICTIONS, DRUG &  
 ALCOHOL INSTITUTE  
 est. 1973

# ADAI INFORMATION SERVICES & CLEARINGHOUSE

Meg Brunner, MLIS

Developing and disseminating a wide variety of resources in support of the ADAI's mission to advance research, policy, and practice to improve the lives of people affected by substance use.

## OVERVIEW

The ADAI Info Team supports the institute's information needs by managing its websites, specialized digital collections, marketing and communications, graphic design, research dissemination, instructional design, systematic/scoping review support, information literacy and accessibility education, and a range of traditional library services (document delivery, lit searches, etc.).

Through these services, as well as our blogs and social media, email lists, newsletters, and more, we take the knowledge generated by ADAI's faculty and staff and make it available to anyone who needs it, recognizing that everyone from scientists to the public has a need for valid and reliable information about drug and alcohol use.

## WE AIM TO

- Develop a free online collection of non-stigmatizing and compassionate stock photos related to substance use treatment, prevention, and harm reduction for use by anyone who does education or outreach on drug and alcohol use (the "Empathy Lens" project, funded by the National Libraries of Medicine).
- Expand outreach to target audiences with a focus on making information accessible, practical, and easy to understand.
- Build relationships with key stakeholders and subject matter experts who can help develop new and effective prevention materials and strategies for the ADAI Clearinghouse.



"The days of information gatekeeping in academia belong in the past. Everyone deserves access to research findings and other scientific information delivered to them in a format they can understand and apply to their lives and the lives of the people they care about."

Meg Brunner, MLIS  
ADAI

adaiclearinghouse.net  
meganw@uw.edu





Est. 1996

# ADDICTION PSYCHIATRY FELLOWSHIP

Jonathan Buchholz, MD: Director

EDUCATION

Developing psychiatrists into addiction experts poised to advocate for and treat people experiencing substance use and addiction.

## OVERVIEW

The overarching objective of the program is to provide psychiatric physicians with advanced training in the skills, clinical judgment, and knowledge necessary to the practice of addiction psychiatry enabling them to assume leadership positions in the field and advocate for those who experience substance use and addiction.

Core competencies include excellence in patient care, medical knowledge, practice-based learning, quality improvement, interpersonal and communication skills, professionalism, and systems-based practice.

## WE AIM TO

- Recruit and retain diverse, bright, compassionate psychiatrists eager to care for patients with substance use and addictive disorders.
- Develop innovative treatment approaches for those who use substances within training sites.
- Advocate for continued improvement in medical education and treatment of substance use disorders within the school of medicine and throughout clinical training sites.



"Treating individuals experiencing substance use disorders reminds me of the amazing resiliency that lies within us all. As a clinician educator at the VA Puget Sound, I am humbled at the trust both patients and trainees place in me every day."

Jonathan Buchholz, MD  
Director

[addiction.psychiatry.  
uw.edu](http://addiction.psychiatry.uw.edu)

Est. 2019

# BASICS INNOVATIONS GROUP

Christine Lee, PhD & Jason Kilmer, PhD: Co-Directors

Reducing barriers for campuses and organizations implementing evidence-based prevention strategies through world-class training, implementation support, and intervention delivery.

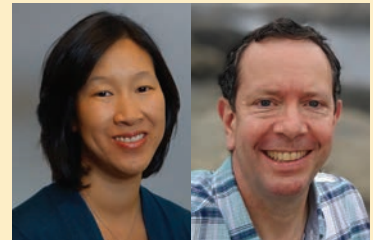
## OVERVIEW

For almost 40 years, the University of Washington has been the leader in developing and testing evidence-based programs to help college students who may be struggling with substance use and co-occurring mental health issues. Our prevention and intervention programs have been implemented with thousands of college students and our work has been incorporated or adapted into programs in colleges across the nation.

The BASICS Innovations Group's goals are to impact the health and wellness of our nation's college students by providing evidence-based programming and tools for educators and prevention partners to ensure their students' success.

## WE AIM TO

- Bridge the gap between what science shows is effective and what is done in the "real world."
- Reduce barriers for implementing evidence-based tools and programs.
- Provide evidence-based assessment, screening and brief intervention tools, and wellness and prevention programs to educational and local communities as they seek to promote health and reduce harms from alcohol and other substance use and co-occurring mental health issues.



"Alcohol prevention professionals often face numerous real-world challenges to implementing prevention and intervention efforts, including those related to budget, staffing, and conflicting messages about 'what works.' We are dedicated to helping professionals overcome these and other barriers by providing training, consultation, and tools to support implementation."

Christine Lee, PhD &  
Jason Kilmer, PhD  
BASICS Innovations, Directors

[basicsinnovations@uw.edu](mailto:basicsinnovations@uw.edu)

Est. 2021

# BEHAVIORAL HEALTH SUPPORT SPECIALIST CLINICAL TRAINING PROGRAM (BHSS)

Anna Ratzliff, MD, PhD: Principal Investigator | Bill O'Connell, EdD: Director | Savannah Tidwell, BS: Program Manager

EDUCATION

A catalyst for statewide development of a bachelor level clinician to expand access to care for mental and behavioral health.

## OVERVIEW

A Behavioral Health Support Specialist or BHSS will be a new credential available in Washington State in 2025. A BHSS will provide brief, evidence-informed interventions for common behavioral health conditions under supervision across a variety of settings. Settings include integrated care, specialty mental health care, community-based services and crisis care. A BHSS will obtain education in Washington State colleges or universities that have committed to teaching the BHSS competencies (applied skills) in their existing four-year degree programs. Degrees include psychology, social work and behavioral healthcare. The time involved in preparation is approximately 18-24 months and includes a practicum at a site approved by the education program. UW Tacoma Social Welfare program is preparing to deliver the curriculum for students who elect this career path.

## WE AIM TO

- Develop and distribute a model curriculum to guide Washington State Colleges and Universities in preparing a BHSS.
- Support the identification of practicum sites including training for clinical supervisors.
- Contribute to policy development that sustains the work of the BHSS across a variety of behavioral health settings.



"I am really excited about this effort and the expansion of the workforce in Behavioral Health. I worked in integrated care for Seniors and see the tremendous value of adding this role to promote mental health and provide interventions for behavioral health needs."

**Savannah Tidwell**  
BHSS Program Manager

[bhss-wa.psychiatry.uw.edu](https://bhss-wa.psychiatry.uw.edu)  
[bhsswa@uw.edu](mailto:bhsswa@uw.edu)





Est. 2017



ADDICTIONS, DRUG & ALCOHOL INSTITUTE  
est. 1973

EDUCATION

# CENTER FOR ADVANCING ADDICTION HEALTH SERVICES (CAAHS)

Bryan Hartzler, PhD: Director

Spanning a science-to-service continuum, we deploy technical assistance strategies to accelerate workforce implementation of helpful addiction treatment and recovery practices.

## OVERVIEW

Informed by two decades of experience, Dr. Hartzler leads a team of UW-based staff and national rubric of contractors with subject matter expertise in substance use prevention, treatment, recovery, and harm reduction. This collection of personnel is well-positioned to offer organizational consultation, training and technical assistance, and health product design to advance community-based dissemination of useful health services among those who serve persons with substance use disorders. Targeted to health organizations and inclusive of the executive, supervisory, direct-care and administrative personnel they employ, CAAHS efforts to date have encompassed a host of empirically-supported clinical practices and organizational quality improvement processes.

## WE AIM TO

- Promote awareness of helpful addiction treatment and recovery practices in Alaska, Idaho, Oregon & Washington
- Increase implementation readiness of the addiction workforce serving persons with substance use disorders
- Facilitate systems-level changes by health organizations to support new practices implemented by their staff
- Collaborate with single-state authorities, community-based organizations, and the UW campus community



"We're well-positioned to advance the reach and quality of addiction health services—via federally-funded vehicles like Northwest ATTC or Opioid Response Network, collaborative partnerships with state or local organizations, and contributions to implementation science research."

Bryan Hartzler, PhD  
CAAHS Director

[adai.uw.edu/caahs](http://adai.uw.edu/caahs)  
[hartzb@uw.edu](mailto:hartzb@uw.edu)



Est. 2022



ADDICTIONS, DRUG &  
ALCOHOL INSTITUTE  
est. 1973

# CENTER FOR COMMUNITY- ENGAGED DRUG EDUCATION, EPIDEMIOLOGY & RESEARCH (CEDEER)

Caleb Banta-Green, PhD, MPH, MSW: Research Professor

EDUCATION

Providing evidence-based, useful information for those who use drugs and those who care for people who use drugs.

## OVERVIEW

We join research with the “real-world” to generate innovative, evidence-based, and person-centered responses to the use of opioids, stimulants and other illicit substances. Our goal is to collect and share knowledge gained from research, local data, clinical expertise, and personal lived experiences of people who use drugs.

For our educational work, we provide accurate information via our websites, regular online and in-person trainings, and ongoing implementation support for programs across WA State. We also provide unique and curated data analyses of local drug epidemiology data.

## WE AIM TO

- Expand opportunities for the voices of people who use drugs to influence our educational materials and processes.
- Expand awareness and uptake of the full array of services that can improve the health of people who use drugs- treatment, health care, harm reduction, and recovery supports.
- Decrease stigma by improving awareness of the role of substances in peoples' lives, the social determinants of health, and the systemic approaches needed to support them and improve their health.
- Continue to improve the knowledge and skills of the many types of care providers working with people who use substances.



“This year’s Transforming Our Communities [gathering] brought folks together to discuss harm reduction, drug checking, and how to support youth. It was rewarding to bring such great information and resources to community members across the state.”

**Ali Lenox**

Continuing Education Coordinator

[adai.uw.edu/ceeder](http://adai.uw.edu/ceeder)  
[calebbg@uw.edu](mailto:calebbg@uw.edu)

Est. 1993

# CENTER OF EXCELLENCE IN SUBSTANCE ADDICTION TREATMENT & EDUCATION (CESATE)

Eric Hawkins, PhD: Director

A national resource dedicated to improving clinical outcomes and quality of care for Veterans with substance use conditions.

## OVERVIEW

CESATE's service goals are to: 1) develop, implement, evaluate, and disseminate evidenced-based clinical practices and educational initiatives, 2) provide education and training in treatment of substance use conditions, 3) provide consultation and technical assistance to the VA health care system, 4) conduct clinical, health services, and educational research to improve the health of veterans with substance use conditions. Although not singled out as a specific service goal, our Center works closely with and supports the Office of Mental Health to ensure clinical, educational, and research activities align with national priorities.

## WE AIM TO

- Expand access to treatments for substance use disorders in non-addiction settings (e.g., primary care, mental health clinics)
- Advance measurement-based care in substance use disorder specialty care programs
- Develop and implement novel treatments and means of treatment delivery for substance use disorders, with the goal of disseminating knowledge, educating providers, and improving veterans quality of life
- Begin to address the intersection between suicide prevention and substance use disorders



"At CESATE, our mission is clear – to improve the clinical outcomes and quality of care for those who served."

**Eric Hawkins, PhD**  
CESATE Director

[mirecc.va.gov/CESATE-Seattle.asp](http://mirecc.va.gov/CESATE-Seattle.asp)  
[eric.hawkins@va.gov](mailto:eric.hawkins@va.gov)



Est. 2024

# CESATE ALCOHOL & DRUG EDUCATION WEB-COURSE

Tracy Simpson, PhD: CESATE Senior Faculty

A new online alcohol and drug education course for veterans, loved ones and members of the public.

## OVERVIEW

Congress requested that the Veterans Association (VA) create a comprehensive alcohol and drug education website to serve veterans, their loved ones and the general public. Led by Dr. Tracy Simpson, the Center for Excellence in Substance Addiction Treatment and Education (CESATE) worked with the VA's Office of Mental Health Substance Use Disorder Division, the VA's Web-Based Self-Help Program, and numerous subject matter experts and specialists with lived experience to design a course that's flexible and essentially a "choose your own adventure" to accommodate various needs around alcohol and drug use issues. This course will launch in November 2024.

## WE AIM TO

- Provide basic facts about the short and longer term effects of alcohol and drugs as well as guidance around safer use levels.
- Explain the relationships between alcohol and drug use disorders and other mental health disorders.
- Provide an overview of how people make and maintain changes in their substance use.
- Provide VA and community-based treatment resources.



VA Alcohol and Drug Education home page.

Est. 2015

# INTEGRATED CARE TRAINING PROGRAM (ICTP)

Anna Ratzliff, MD, PhD: Director ICTP | Betsy Payn, MA, PMP: Senior Project Manager | Esther Solano: Program Coordinator

Bringing continuing education in psychiatry and addiction care to providers across Washington State

## OVERVIEW

We believe there is no health without mental health and that by training health care providers in evidence-based integrated care, we will increase the access to effective mental health care across Washington State. We run a weekly Psychiatry and Addictions Case Conference ECHO program that has provided thousands of hours of continuing education.

## WE AIM TO

- Continue to provide access to high quality mental health and addiction continuing education to Washington State providers.
- Expand our offerings to include a continuing education podcast to allow more access to education on cutting edge mental health and addiction care.

*UW Psychiatry and Addictions Case Conference Session (see page 41).*



“The UW PACC Case Conferences has provided our rural/semi-rural clinical team the ability to access psychiatric/addiction expertise and case discussions that would be otherwise unavailable in our service area.”

**Alberto Carbo**  
Peninsula Community Health  
Services

[ictp.uw.edu](http://ictp.uw.edu)  
[uwitcp@uw.edu](mailto:uwitcp@uw.edu)

Est. 2016

# PSYCHIATRY AND ADDICTION CASE CONFERENCE (PACC)

Mark Duncan, MD: Medical Director/Planner | Richard Rles, MD; Karl Stephens, PhD; Barb McCann: Panelists/Planners | Cara Towle, RN, MSN: Admin Director

Improving psychiatric and addiction treatment through an online learning community for providers across Washington State.

## OVERVIEW

The UW Psychiatry and Addictions Case Conference series (PACC) began in July 2016 and is a free, weekly teleconference that connects community providers with UW Medicine psychiatrists, psychologists, and addictions experts. Sessions include both an educational presentation on an addictions or psychiatry topic and case presentations where providers who participate receive feedback and recommendations for their patients.

## PROGRAM GOALS

- Expand the mental health and addictions care capacity of health care professionals in remote, underserved areas of Washington
- Offer telehealth resource support to build the confidence and skills of providers who care for patients with mental and behavioral health conditions
- Train psychiatry fellows to deliver peer learning.

## PACC REACH: 2017-2022



Other States:	
AK	3
CA	3
CO	1
GA	1
ID	2
MT	2
NY	1
OR	4
TN	1
VA	1
WY	1
<b>Total</b>	<b>20</b>

Other Countries:  
Australia  
New Zealand  
Germany



“UW PACC has developed into a unique and needed supportive educational community for providers in practice around the state. The learning and support the community providers bring to PACC is what makes it so special.”

**Mark Duncan, MD**  
UW PACC Medical Director

[ictp.uw.edu/programs](http://ictp.uw.edu/programs)  
[uwitcp@uw.edu](mailto:uwitcp@uw.edu)



Est. 1993

# SIGNIFICANT OPPORTUNITIES IN ADDICTION RESEARCH (SOAR) NEUROSCIENCE DOCTORAL READINESS PROGRAM

Paul Phillips, PhD: Professor | Susan Ferguson, PhD: Professor

Empowering the next-generation of neuroscientists through innovative training to transform our understanding of substance use and addiction.

## OVERVIEW

The UW training program in Addiction Neuroscience and the UW-SOAR program are designed to provide a cohesive training environment for postbaccalaureates, graduate students, and postdoctoral fellows interested in studying the molecular, cellular and behavioral aspects of substance use and substance use disorders. These programs emphasize training in research skills along with career development professional skills and responsible conduct of research/ethical skills. Faculty mentors are part of the NAPE (Neurobiology of Addiction, Pain and Emotion) Center and provide training in a broad range of cutting-edge research techniques.

## PROGRAM GOALS

- Bolster awareness and interest in careers that incorporate addiction neuroscience by increasing outreach and educational initiatives.
- Increase training opportunities for groups that have been underrepresented in neuroscience to ensure a broader range of perspectives in research.
- Enhance interdisciplinary collaboration to expand the scope and impact of our training programs.



"As a mentor, the most rewarding moment is seeing a trainee achieve the goals that pave the way for the next stage of their career."

Susan Ferguson, PhD  
SOAR Mentor

[depts.washington.edu/  
wnape](https://depts.washington.edu/wnape)  
[lusingeg@uw.edu](mailto:lusingeg@uw.edu)



Est. 2014

# UW PRIMARY CARE ADDICTION TREATMENT

Mark Duncan, MD

EDUCATION

An educational clinic providing onsite access to specialty addiction consultations for patients at the UW Northgate primary care clinic.

## OVERVIEW

This educational focused clinic allow addiction psychiatry fellows develop the knowledge, skills, and attitudes in diagnosing, managing, and treating substance use disorders from an evidence based perspective pertinent to primary care settings within an integrated care model.

## PROGRAM GOALS

- Developing expertise around SUD assessment and treatment in a primary care settings.
- Improve knowledge base around Integrative Care Models for the treatment of SUDs in primary care.
- Understand ways to support primary care providers and clinics in delivering SUD treatment.



“Addiction treatment demands low barrier access to treatment and primary care settings are often the best way medical systems can do this.”

Mark Duncan, MD

[uwmedicine.org/locations/  
primary-care-northgate](http://uwmedicine.org/locations/primary-care-northgate)

# UW Medicine

DEPARTMENT OF PSYCHIATRY  
AND BEHAVIORAL SCIENCES



## POLICY

Our faculty and staff contribute to local, state, regional, national, and global dialogue on policies that affect the lives of individuals and families living with mental health conditions and addiction. Faculty expertise helps address challenges such as the stigma associated with substance use and addiction, the interface of social services, health care, and our criminal-legal system, and the lack of access to effective care for the millions of individuals with substance use disorders, including those whose lives are impacted by drug toxicity death (i.e., overdose), one of the largest public health crisis our country is facing today.





Est. 2022



ADDICTIONS, DRUG &  
ALCOHOL INSTITUTE  
est. 1973

# CENTER FOR COMMUNITY- ENGAGED DRUG EDUCATION, EPIDEMIOLOGY & RESEARCH (CEDEER)

Caleb Banta-Green, PhD, MPH, MSW: Research Professor

POLICY

Utilizing research and local data to educate policy makers to drive evidence informed policy making.

## OVERVIEW

We join research with the “real-world” to generate innovative, evidence-based, and person-centered responses to the use of opioids, stimulants and other illicit substances. Our goal is to collect and share knowledge gained from research, local data, clinical expertise, and personal lived experiences of people who use drugs. This knowledge is used to improve policies and services to reduce substance-related harms and improve the lives of people impacted by substance use.

Staff, faculty and students sit on multiple policy and practice advisory committees at the local, state and federal levels; they have provided testimony to policy makers; and they help educate policy makers as they draft legislation.

## WE AIM TO

- Continue to work with policy makers to enact laws that are evidence based and will positively impact the lives of people who use drugs.
- Improve policy to ensure availability of impactful and evidence based services for people who use drugs.
- Provide local data about the needs of people who use drugs.



“I was privileged to present our Center’s research findings to the Senate Finance Committee in May 2024. Our work, along with our community partners, and the invaluable contributions of their clients has contributed to the introduction of the Fentanyl Overdose Reduction Act.”

Caleb Banta-Green, PhD,  
MPH, MSW  
Research Professor



Caleb Banta-Green (right) meets with Gov. Jay Inslee to discuss the state's opioid epidemic and solutions. (Photo: Office of the Governor)

[adai.uw.edu/ceeder](http://adai.uw.edu/ceeder)  
[calebbg@uw.edu](mailto:calebbg@uw.edu)

Est. 1991



ADDICTIONS, DRUG &  
ALCOHOL INSTITUTE  
est. 1973

POLICY

# PARENT-CHILD ASSISTANCE PROGRAM (PCAP)

Susan Stoner, PhD: Director

Promoting evidence-based intervention with parents at risk of adverse impacts associated with substance-exposed pregnancies.

## OVERVIEW

PCAP is an award-winning, evidence-informed case-management program that offers home visitation to pregnant and parenting individuals who have engaged in at-risk substance use during pregnancy. PCAP seeks to promote parents' long-term recovery and prevent future prenatal substance use. PCAP is part of the ADAI Center for Substance-Affected Person, Pregnancy & Health Intervention Research & Education (SAPPHIRE).

## WE AIM TO

- Provide training and technical assistance on PCAP to community- and agency-based providers.
- Conduct program evaluation of WA PCAP on behalf of the Washington Health Care Authority.
- Collaborate with other researchers and community partners to build the evidence base for PCAP and its evolution.



"Since 1991, PCAP has grown in Washington State to cover 20 counties and serve up to about 1,500 clients annually. PCAP is also delivered in California, Nevada, Oklahoma, Nebraska, across Canada and in Western Australia."

Susan Stoner, PhD  
PCAP Director

[pcap.psychiatry.uw.edu](http://pcap.psychiatry.uw.edu)  
[team-pcap@uw.edu](mailto:team-pcap@uw.edu)

# UW Medicine

DEPARTMENT OF PSYCHIATRY  
AND BEHAVIORAL SCIENCES



## OUR PEOPLE

More than 150 faculty, staff, and affiliates are working on addiction care and research within the UW Department of Psychiatry and Behavioral Sciences. The following people represent a large portion of our dedicated employees working to improve the lives of individuals and families within our community.



**Abdallah, Devon, PhD**

abdallah@uw.edu

Center for the Study of Health and Risk Behaviors

Devon Abdallah worked for the University of Washington for twelve years primarily in the field of alcohol and cannabis research with young adults. After a brief hiatus working in policy at the City of Seattle, Devon recently returned to work for Dr. Christine Lee again at the Center for the Study of Health and Risk Behaviors.

**Acolin, Jessica, MA, PhD**

jyacolin@uw.edu

Center for the Study of Health and Risk Behaviors, T32 Psychology Training in Alcohol Research

My research focuses on young adult mental and behavioral health in the face of climate change, with a focus on climate anxiety, coping, and resilience.

**Adachi, Jamie, MPH**

Perinatal Mental Health & Substance Use Education, Research & Clinical Consultation (PERC) Center

**Adrian, Molly, PhD**

CSPAR



**Austin, Elizabeth, PhD, MPH**

austie@uw.edu

Department of Health Systems & Population Health, CFAR

Elizabeth J. Austin, PhD, MPH is a Senior Research Scientist in the Department of Health Systems and Population Health at the University of Washington. She conducts a variety of formative and mixed methods implementation

research that aims to improve adoption of evidence-based substance use care, especially in primary care settings.

**Baldwin, Laura-Mae, MD, MPH**

National Drug Abuse Treatment Clinical Trials Network (CTN)

**Balint, Sophie**

sbalint@uw.edu

CSHRB



**Banta-Green, Caleb, PhD, MPH, MSW**

calebbg@uw.edu

Center for Community-Engaged Drug Education, Epidemiology & Research; Addictions, Drug & Alcohol Institute PBSci; School of Public Health-Departments of Epidemiology & Health Systems and Population Health; Director of the Center for Community-Engaged Drug Education, Epidemiology & Research at the Addictions, Drug & Alcohol Institute.

A health services researcher and epidemiologist who conducts multiple-method research studies. His teams provide Statewide training and implementation support for diverse projects that support the health of people who use drugs.

**Bauer, Amy, MD, MS**

abauer1@uw.edu

Community-Based Integrated Care Fellowship

**Basu, Hana**

hbasu02@uw.edu

CSHRB



**Bedard-Gilligan, Michele, PhD**

mab29@uw.edu

Trauma Recovery and Resilience Innovations Program (TRI), Center for the Study of Health and Risk Behaviors (CSHRB), UW Center for Anxiety and Traumatic Stress (UWCATS)

Dr. Bedard-Gilligan is a Professor and licensed clinical psychologist. Her research focuses on recovery following trauma exposure, with specific emphasis on PTSD and substance use. She leads several clinical trials testing brief interventions to promote trauma recovery and is involved in training providers in trauma-focused behavioral treatment approaches.

**Benally, Tee**

hbasu02@uw.edu

CSHRB

**Ben-Zeev, Dror, PhD**

dbenzeev@uw.edu

BRiTE Center

**Bespalova, Nadejda, MD**

nbespal@uw.edu

Perinatal Mental Health & Substance Use Education, Research & Clinical Consultation (PERC) Center

Dr. Nadejda Bespalova completed her psychiatry residency at NYU School of Medicine and then an addiction psychiatry fellowship at the University of Washington. Her area of clinical interest and research is substance use disorders in pregnancy and the perinatal period.

**Bhat, Amritha, MD, MPH**

amritha@uw.edu

PERC center, AIMS center

I am a perinatal psychiatrist and Associate Professor. My work is focused on improving mental health and substance use disorder treatment access in the perinatal period. I do this through education, workforce development, clinical care and consultation, and health services research.

**Bhatraju, Elly, MD, MPH**

epb6@uw.edu

Harborview Addiction Consult Service

**Blanchard, Brittany, PhD**

bblancha@uw.edu

Division of Population Health, Harborview Injury Prevention and Research Center (HIPRC), UW AIMS Center

Brittany Blanchard (she/they) is a licensed clinical psychologist and Assistant Professor. She serves as Director of the Division of Population Health Analytics Team (P-HAT) and ALACRITY Center Methods Core. She is currently completing the NCATS-funded ITHS KL2 Career Development Program. Her research focuses on integrating harm reduction into primary care settings and measurement-based care.

**Blayney, Jessica, PhD**

jab24@uw.edu

Center for the Study of Health and Risk Behaviors

Dr. Blayney's research aims to understand the risks for and consequences of sexual victimization. More specifically, this work centers around how social contexts influence sexual victimization risk as well as variation in post-victimization recovery, such as posttraumatic stress disorder, alcohol use, and sexual risk behaviors.

**Brunner, Meg, MLIS**

meganw@uw.edu

UW Addictions, Drug &amp; Alcohol Institute

Meg Brunner, MLIS, is the Director of Information Services at the UW Addictions, Drug & Alcohol Institute, with 25+ years of expertise on information collection, organization, dissemination, and accessibility. Ms. Brunner currently leads three special projects: the CTN Dissemination Library (NIDA), the ADAI Clearinghouse (DOH, NW HIDTA), and the Empathy Lens anti-stigma project (NLM).

**Buchholz, Jonathan, MD**

jonathan.buchholz@va.gov

Director, Addiction Psychiatry Fellowship; Director, Addiction Consultation Service VA Puget Sound; Psychiatry Consultation Line

As an addiction psychiatrist, Dr. Buchholz spends most of his clinical time on the addiction consultation and inpatient psychiatry unit caring for patients with co-occurring disorders at the Seattle VA. He is an assistant professor at the University of Washington with academic interests centered around improvement of education for substance use disorders to medical students, psychiatry residents, and addiction fellows.

**Cadigan, Jennifer, PHD**

cadiganj@uw.edu

Center for the Study of Health and Risk Behaviors; Department of Psychiatry and Behavioral Sciences

Dr. Cadigan is a licensed psychologist and Assistant Professor with a research focus on adolescent and young adult health and wellbeing. Her work aims to develop, test, and disseminate prevention and intervention programs to reduce substance misuse and co-occurring mental health concerns, including among those using substances to cope with negative affect and loneliness.

**Calhoun, Brian, PhD**

bhc120@uw.edu

Center for the Study of Health and Risk Behaviors

I am a developmental psychologist studying age-related changes in adolescent and young adult substance use as well as daily process models of substance use.

**Call, Jarrod, LCSW, PhD**

jbcall@uw.edu  
School of Social Work & Criminal Justice, UW Tacoma

As a queer scholar, Jarrod seeks to support LGBTQ people through their research on how sexuality and gender interact, with an emphasis on transgender healthcare access. They have also worked as a substance abuse counselor, focusing on residential care for high-risk men with extensive histories of homelessness and incarceration.

**Canavese, Sarah, MPH, MCHES**

scanaves@uw.edu  
Opioid Response Network, Northwest Addiction Technology Transfer Center

Sarah Canavese has her Bachelor's in Journalism and a minor in Event Planning and her Master's in Public Health, she has combined these skills over the last 10 years to engage and educate audiences around tobacco use, mental health, and opioid use.

**Canning, Jessica, PhD**

jrcannin@uw.edu  
Center for the Study of Health and Risk Behaviors; Seven Directions: A Center for Indigenous Public Health

**Carlini, Beatriz, PhD, MPH**

bia@uw.edu  
Research Associate Professor, Psychiatry & Behavioral Sciences Department, Cannabis Education and Research Program Director, Addiction, Drug & Alcohol Institute (ADAI)

As a first-generation immigrant and a foreign-born American citizen, I am especially interested in the impact of cannabis and tobacco use on perpetuating health and social disparities. I have a passion for fostering social inclusion, challenging stereotypes, and fighting stigma.

**Carmel, Adam, PhD**  
CSPAR**Cavalli, Jessica, MS, PhD**

cavallij@uw.edu  
Center for the Study of Health and Risk Behaviors, Psychology Training in Alcohol Research Fellowship

I am a postdoctoral fellow with prior research experience examining frequent and problematic cannabis use as they relate to emotion regulation, stress, and cognition. My current research interests include underlying mechanisms, risk/protective factors, and prevention/intervention efforts related to the development and maintenance of co-occurring substance use and mental health concerns.

**Chang, Denise, MD**

denisech@uw.edu  
Integrated Care Training Program

**Chavkin, Charles, PhD**

Director, Center for the Neurobiology of Addiction, Pain & Emotion (NAPE)

**Clifasefi, Seema, PhD, MSW**

seemac@uw.edu  
Harm Reduction Research and Treatment Center; Doorway Project Director

Seema is an associate professor at the University of Washington and co-directs the Harm Reduction Research and Treatment (HaRRT) Center. Her research focuses on substance use, mental health, and housing policy, particularly evaluating harm reduction interventions for people experiencing homelessness and substance use problems.

**Coffey, Kevin, PhD**

mrcoffey@uw.edu  
NAPE, MIRECC

Dr. Coffey's lab studies the neural dynamics of opioid use disorder using an oral fentanyl self-administration model in male and female rats. This model captures individual and sex differences underlying diverse responses to fentanyl use, which may lead to more inclusive and effective treatment strategies.

**Collins, Susan E., PhD**

collinss@uw.edu  
Licensed clinical psychologist, Adult Outpatient Psychiatry at UW-Roosevelt; Co-director, Harm Reduction Research and Treatment (HaRRT) Center; Professor, Department of Psychiatry and Behavioral Sciences; Adjunct Professor, Department of Psychology; Adjoint Professor, Department of Psychology

Dr. Collins has nearly 30 years of experience in substance use research, assessment, and treatment, with over 7 dozen publications, including the evidence-based treatment manual, Harm Reduction Treatment for Substance Use. Her personal experiences with substance-related harm and her community-based work drive her commitment to reducing stigma and meeting people wherever they're at.

**Comtois, Kate, PhD, MPH**

Center for Suicide Prevention and Recovery (CSPAR)

**Cowley, Deborah, MD**

dcowley@uw.edu  
Perinatal Psychiatry Consultation Line; PERC Center

Deborah Cowley, MD is Professor Emeritus in the Department of Psychiatry and Behavioral Sciences, Medical Director for the statewide, state-funded Perinatal Psychiatry Consultation Line for providers (Perinatal PCL), and co-developed our ECHO-model educational program in perinatal mental health and substance use disorders for health care providers.

**Cragg, Kase**

kcragg@uw.edu  
CSHRB

**Duncan, Mark, MD**

mhduncan@uw.edu  
 Integrated Care Training Program, AIMS Center,  
 ADAI

Trained in both family medicine and addiction psychiatry, Mark Duncan has been on faculty since 2013 and is an associate professor. He works clinically at the UW psychiatry clinic and Northgate primary care clinic. His teaching and research focus on bringing substance use and mental health treatment to non-specialty settings.

**Dworkin, Emily, PhD**

edworkin@uw.edu  
 CSHRB

**Eakins, Danielle, PhD**

deakins@uw.edu  
 Seven Directions, A Center for Indigenous Public Health, University of Washington

Danielle Eakins is a licensed clinical psychologist and a research scientist at Seven Directions. Danielle is dedicated to supporting behavioral wellness through collaborative, strengths-based partnerships with Indigenous communities. At Seven Directions, Danielle focuses on incorporating a clinical lens to technical assistance, evaluative assessment and inclusive programming work for the Tribal Opioid Overdose Prevention Project.

**Egashira, Leo, MBA**

seattleo@uw.edu  
 Seven Directions, A Center for Indigenous Public Health

Fifteen years' experience working with American Indian & Alaska Native community partners on behavioral health issues, including alcohol and substance use.

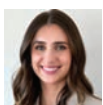
**Erickson, Jennifer, DO**

jmericks@uw.edu  
 Integrated Care Training Program

**Essali, Norah, MD**

nessali@uw.edu  
 Harborview Mental Health and Addiction Services, Harborview Pioneer Square Clinic and Outreach (Healthcare for The Homeless Program), and Harborview Addiction Consult Service.

I completed my psychiatry residency at the Medical College of Georgia and addiction psychiatry fellowship at the University of Washington. My areas of interest and expertise include treating substance use and co-occurring disorders in inpatient and outpatient settings, especially in under-served populations.

**Eyde, Lusine, PhD**

lusineg@uw.edu  
 UW Center for the Neurobiology of Addiction, Pain, and Emotion (NAPE), UW Substantial Opportunities in Addiction Research (SOAR)

Program Manager at the UW NAPE Center, coordinating professional development, trainings, and events for trainees in neuroscience and addiction research.

Administrator for the SOAR program, fostering research excellence and career growth. Passionate about supporting scientists in mental health and addiction studies.

**Fairlie, Anne, PhD**

afairlie@uw.edu  
 Center for the Study of Health and Risk Behaviors (CSHRB)

My program of research focuses on: (1) etiologic and self-regulation processes that operate within-person over time to influence young adults' substance use behaviors (e.g., alcohol, cannabis) and (2) the development, refinement, and testing of substance use interventions for young adults.

**Farnum, Melissa, MA**

mfarnum@uw.edu  
 AIMS Center; Integrated Care Training Program; Behavioral Health Support Specialist Clinical Training Program

Melissa is an instructional designer who works with faculty to create a variety of training offerings focused on integrated care. Melissa holds a BA in Psychology from the University of Northern Colorado and a MA in Teaching English to Speakers of Other Languages (TESOL) from New York University.

**Ferguson, Susan, PhD**

smfergus@uw.edu  
 Director, Addictions, Drug & Alcohol Institute (ADAI); Professor, UW Psychiatry and Behavioral Sciences; Faculty in Graduate Program in Neurosciences

Susan Ferguson, PhD, is the director of the Addictions, Drug & Alcohol Institute (ADAI). Dr. Ferguson is a neuroscientist who investigates the neural basis of opioid and stimulant addiction, as well as polysubstance use. Her research uses a multilevel approach to understand the brain processes that underlie decision-making, motivation and impulsivity, as well as how these processes regulate drug reward and addiction. In addition, she examines how external factors, including the environment and social interactions, contribute to drug use and the development of substance use disorders. As ADAI director, Dr. Ferguson oversees a diverse team of experts aimed at reducing the harms of drug use across the research continuum, including preclinical research, clinical trials and population-level outcomes research and educational/training efforts.

**Feltner, Alanna, MPA, MSW**

alanna6@uw.edu  
 ADAI, PCAP, NWATTC

Alanna joined ADAI in 2022 and works as an evaluator for both the Parent Child Assistance Program (PCAP) and the Northwest Addiction Technology Transfer Center (Northwest ATTC). She is interested in implementation science, community-based evaluation, and substance use and misuse treatment and prevention. Alanna is also interested in culturally responsive



interventions and spent several years teaching and researching abroad.

**Fleming, Charles**

cnbflem@myuw.net  
CSHRB



**Floyd, Anthony, PhD**

asfloyd@uw.edu  
ADAI Center for Community-Engaged Drug Education, Epidemiology, and Research (CEDEER)

Dr. Floyd is a Research Associate Professor with the Addictions, Drug & Alcohol Institute (ADAI) providing clinical trial, program evaluation, and regulatory expertise in the treatment and prevention of substance use disorder, in particular opioid use disorder. He has directed studies in both community treatment and emergency department settings.

**Fossos-Wong, Nicole**

njf2@uw.edu  
CSHRB



**Forrester, Mollie, MSW, LICSW**

mgfarr@uw.edu  
Psychiatry Consultation Line Perinatal Psychiatry Consultation Line Family and Caregiver Training and Support Program

Mollie Forrester, MSW, LICSW, provides administrative oversight for our department's statewide provider and patient consultation lines, including the Psychiatry Consultation Line, the Perinatal Psychiatry Consultation Line, and Mental Health CareConnect. The goal of these programs is to increase access and decrease barriers to effective mental health and substance use disorder care for patients and providers across Washington.

**Fossos-Wong, Nicole, BS**

njf2@uw.edu  
Center for the Study of Health and Risk Behaviors, Department of Psychiatry and Behavioral Sciences

I am a Research Scientist working on brief intervention studies targeting alcohol and substance use among young adults.



**Frohe, Tessa, PhD**

frohe06@uw.edu  
Harm Reduction Research and Treatment (HaRRT) Center, the Center for the Study of Health and Risk Behaviors (CSHRB)

Dr. Tessa Frohe is a harm reductionist, Assistant Professor, and NIAAA K01-funded Investigator. She partners with individuals who use drugs and have experienced homelessness to co-develop evidence-based interventions that reduce substance-related harms. Her current work adapts an in-person treatment into a telehealth platform to improve digital health access within permanent supportive housing.

**Gaffney, Angela**

iamgaff@uw.edu  
CSHRB



**Gaine, Victoria, MA**

vlgaines@uw.edu  
Center for the Study of Risk and Health Behaviors (CSHRB)

Victoria Gaine (she/her) is the research coordinator for the REACT Study. She received an MA in Sociology in 2018. She has taught at the collegiate level, served in AmeriCorps VISTA, and worked at CDC. Victoria's professional and research interests broadly include injury/violence, mental health, and equity/justice.



**Garcia, Tracey, PhD**

garciat@uw.edu  
Center for the Study of Health and Risk Behavior, Department of Psychiatry and Behavioral Sciences

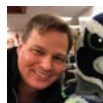
My research focuses on: 1) identifying factors influencing alcohol and cannabis use and their consequences, and 2) developing and implementing tailored prevention and intervention programs, with an emphasis on evaluating their fit for diverse groups.



**Garrett, Sharon, MA, MPH**

ghungus@uw.edu  
Clinical Trials Network PNW Node, Cannabis Education & Research Program, Clinical Trials Consultation & Technical Assistance Program (C-TAP)

Sharon Garrett is a Research Scientist at ADAI. She oversees the implementation of protocols within NIDA's Treatment Clinical Trials Network (CTN), to evaluate interventions for treating substance use disorders. She is a member of ADAI's Cannabis Education & Research Program, where she collaborates on various projects exploring public health impacts of cannabis legalization in WA State.



**Gilson, Michael, JD, PhD**

gilson@uw.edu  
Center for the Study of Health and Risk Behaviors

Michael joined the Center for the Study of Health and Risk Behaviors in 2019. He received his doctorate in Human Development and Family Studies from the University of Arizona. Dr. Gilson's research interests include prevention and intervention efforts for substance use and risk behaviors among college students and adolescents.

**Gohalwar, Inderbir**

inderbir@uw.edu  
Harborview Addiction Consult Service

**Gojdics, Alan, MEd**

Behavioral Health Support Specialist Clinical Training Program



**Graupensperger, Scott, PhD**  
 Graups@uw.edu  
 CSHRB, Psychiatry and Behavioral Sciences

Dr. Graupensperger's active research lab studies the etiology and prevention of addiction-related harms including substance use as well as rapidly-growing forms of gambling such as sports betting and cryptocurrency trading.



**Green, Elan, BS**  
 elang5@uw.edu  
 Center for Novel Therapeutics in Addiction Psychiatry

Elan Green (he/him) is the Research Coordinator for the Center for Novel Therapeutics in Addiction Psychiatry. Elan has a wealth of experience in harm reduction and addiction research. His professional focus is on the integration of psychedelics medicine with treatments for addiction and PTSD.

**Grossman, Sierra, BA**  
 sierrajg@uw.edu  
 ADAI

Sierra is an Administrative Assistant for ADAI. Her duties include calendar management, supporting the ADAI Clearinghouse, assisting with awarding Small Grants, and creating educational and community-focused events. Sierra graduated with her degree in Sociology from the UW-Seattle with a double minor in Gender, Women and Sexuality Studies and Labor Studies.



**Guttmannova, Katarina, PhD**  
 kg27@uw.edu  
 Center for the Study of Health and Risk Behaviors (CSHRB), Center for Studies in Demography and Ecology (CSDE), School of Social Work

I am a developmental psychologist actively involved in research, teaching, and mentoring. My research focuses on: (1) etiology of cannabis, alcohol, and other substance use and related health risk behaviors; (2) substance use-related policy, particularly the impact of cannabis-related policies on youth substance use; (3) health equity.



**Hallgren, Kevin, PhD**  
 khallgre@uw.edu  
 UW Psychiatry and Behavioral Sciences BRITE Center

I am a clinical psychologist and researcher. My work focuses on improving SUD treatment access and quality. I am particularly interested in research that uses telephonic care and digital technologies (digital health apps, EHR systems, patient portals) to support SUD-related care within healthcare settings.

**Harrison, Monica, MSW, LCSW**  
 Behavioral Health Support Specialist Clinical Training Program



**Hartzler, Bryan, PhD**  
 hartzb@uw.edu  
 UW Psychiatry and Behavioral Sciences, UW Addictions, Drug & Alcohol Institute, UW Center for Advancing Addiction Health Services

In two decades at UW, Dr. Hartzler has principally focused on dissemination and implementation of empirically-supported health services for persons with substance use disorders. His scientific and services efforts to date include local, regional, national, and international collaborations, encompassing federal, state, and intramural funding to partner with diverse community settings.



**Hatch, Mary, PhD**  
 hatchm@uw.edu  
 Director, Clinical Trials Consultation and Technical Assistance Program (C-TAP); National Drug Abuse Treatment Clinical Trials Network (CTN)

Dr. Hatch is an Associate Professor at the Addictions, Drug & Alcohol Institute (ADAI). Her research interests are in the development and testing of behavioral and pharmacologic interventions for substance use disorders and HIV prevention. She has long-standing experience developing, implementing, and overseeing large-scale multi-site clinical trials with community treatment providers. Dr. Hatch is a licensed clinical psychologist specializing in the treatment of drug and alcohol addictions and co-occurring depression, anxiety and trauma, practicing at UWMC Outpatient Psychiatry Clinic.



**Hawkins, Eric, PhD**  
 Director, Center of Excellence in Substance Addiction Treatment and Education (CESATE)



**Hendrickson, Rebecca, MD, PhD**  
 rhend@uw.edu  
 VA Puget Sound MIRECC

I am a physician scientist studying the neurobiology and treatment of persistent symptoms after traumatic, including those related to PTSD and substance use disorders. My work emphasizes understanding changes in regulation of stress-regulatory systems like the noradrenergic and dopaminergic systems, and using this understanding to improve clinical treatment options.

**Hermann, Bethany**  
 bherma@uw.edu  
 CSHRB

**Hilovsky, Jack**  
 jhilov@uw.edu  
 CSHRB



**Hultgren, Brittney, PhD**  
 hultgren@uw.edu  
 Center for Study for Health and Risk Behaviors

Utilizing a behavior decision-making approach, I seek to understand amendable factors that influence substance use and related consequences to inform prevention and intervention programs. My focuses have

been young adult alcohol use, cannabis use, and impaired driving behaviors, but my work has also spanned other age ranges, clinical samples, and outcomes.

**Ibarra, Carolina**  
ccibarra@uw.edu  
CSHRB



**Ingalsbe, Michelle, MSW**  
mhansten@uw.edu  
Addictions, Drug & Alcohol Institute, Pacific NW Node - Clinical Trials Network

Michelle Hansten Ingalsbe has worked as a Research Coordinator on multiple ADAI projects since 1995. She is currently the Local QA Monitor for the NIDA Clinical Trials Network Pacific NW Node. Previously, she served as Project Director for a variety of ADAI projects, such as CTN0048 Cocaine Use Reduction with Buprenorphine, ADATSA Treatment Outcome Evaluation, Combining Medications and Behavioral Interventions for Alcoholism (COMBINE Study), Effectiveness of Contingency Management in VA Addictions Treatment, and the Computer Assessment of Simulated Patient Interviews Study. Prior to ADAI, Ms. Ingalsbe worked as a Chemical Dependency Counselor and Case Manager for the Homeless.



**Jaffe, Anna, PhD**  
ajaffe2@uw.edu  
Center for the Study of Health and Risk Behaviors, Psychology Training in Alcohol Research Fellowship (PTAR T32)

Dr. Jaffe conducts research focused on responding to the public health problem of sexual assault and co-occurring alcohol misuse by improving understanding of survivors' experiences and promoting recovery through technology-based interventions.

**James, Jocelyn**  
jorose@uw.edu  
Harborview Addiction Consult Service

**Jobs, Catherine "Cat," RN**  
catjobs@uw.edu

Addiction Consult Service Harborview Inpatient  
Busy inpatient service focused on decreasing suffering, decreasing stigma and increasing access to care.

**Joseph, Molly**  
mollykj@uw.edu  
CSHRB

**Kerlee, Alicia, MSW**  
Perinatal Psychiatry Consultation Line (Perinatal PCL)



**Kilmer, Jason, PhD**  
jkilmer@uw.edu  
Center for the Study of Health & Risk Behaviors  
Adjunct Professor, Psychology Co-Director,  
BASICS Innovations Group

My research focuses on the development, implementation,

and evaluation of prevention and intervention efforts with college students and other young adults, along with providing and supporting implementation of effective strategies.

**Kipp, Jessica**  
jesskip@uw.edu  
CSHRB



**Klein, Jared, MD, MPH**  
jaredwk@uw.edu  
Harborview Addiction Consult Service, UW Addiction Medicine Fellowship Program

Dr. Klein is an internal medicine and addiction medicine physician who practices at Harborview Medical Center. In addition to working on the Addiction Consult Service, he is medical director for Harborview's Downtown Programs, which provides community-based care for vulnerable residents of Seattle.



**Kimmel, Ryan, MD**  
rjkimmel@uw.edu  
Medical Director, Psychiatry Consultation Line



**Lambuth, Joey**  
jlambuth25@gmail.com  
CSHRB

I work with Drs. Graupensperger, Larimer, and Kilmer on a variety of research projects aimed at reducing the harm inflicted by risk behaviors commonly engaged in, such as gambling and substance use.



**Larimer, Mary, PhD**  
larimer@uw.edu  
BASICS Innovations Group

I am a clinical psychologist by training, with expertise in research on etiology, prevention, treatment, and harm reduction for a broad range of addictive and health risk behaviors. As director of the Center for the Study of Health & Risk Behaviors and the Psychology Training in Alcohol Research training program, I focus on integrating diverse perspectives and research methodologies to understand unique and common factors underlying these behaviors and developing novel strategies to reduce harm and improve health.



**Laschober, Tanja, PhD**  
tanjal@uw.edu  
Addictions, Drug & Alcohol Institute (ADAI),  
Department of Psychiatry & Behavioral Sciences,  
University of Washington Medicine

Dr. Laschober is an accomplished Research Professional in healthcare and substance use with over 15 years of experience. She has led more than a dozen research teams to ensure successful implementation of survey studies and clinical trials across the US.



**La Torre, Joseph, PhD, MTS**  
drlatorr@uw.edu  
Center for Novel Therapeutics in Addiction  
Psychiatry



Joseph La Torre, PhD, MTS, (he/they) is the Lead Research Psychologist of the Center for Novel Therapeutics in Addiction Psychiatry. He specializes in the development of novel psychedelic clinical research protocols for understudied indications with a focus on psychotic conditions, bipolar disorder, and racial trauma.

### **Law, Keyne, PhD**

CSPAR



### **Lee, Christine, PhD**

leecm@uw.edu

Center for the Study of Health and Risk Behaviors, BASICS Innovations Group, Psychology Training in Alcohol Research T32 Fellowship Program

My scholarly work focuses on etiology and prevention of high-risk alcohol and cannabis use during young adulthood and increasing access to evidence-based brief interventions.



### **Lehinger, Elizabeth, PhD**

bethl4@uw.edu

Center for the Study of Health and Risk Behaviors, Trauma Recovery Innovations

I am a clinical psychologist with research interests in prevention of alcohol-related harm among young adults, as well as trauma recovery among individuals who engage in substance misuse. I'm interested in how reward processes can be harnessed to develop interventions for these two populations.

### **Leyde, Sarah, MD**

sleyde@uw.edu

Harborview Addiction Consult Service

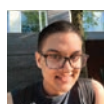


### **Lindgren, Kristen, PhD, ABPP**

kpl9716@uw.edu

Co-Director of Trauma Recovery & Resilience Innovations (TRI), Center for the Study of Health and Risk Behaviors (CSHRB)

Kristen Lindgren is a professor in Department of Psychiatry and Behavioral Sciences. She is co-director of the Trauma Recovery & Resilience Innovations program and a board-certified clinical psychologist. Her research interests focus on cognitive processes in addictions and posttraumatic stress disorder, and on the adaptation and implementation of evidenced based mental health interventions.



### **Lisitza, Arie, MS**

alisitza@uw.edu

Center for the Study of Health and Risk Behaviors

Arie is a recent graduate from the UW's epidemiology program and a research scientist in the Department of Psychiatry. Their research interests include harm reduction, housing justice, intersectionality, and CBPR.

### **Liu, Freda, PhD**

CSPAR

### **Loewer, Estefania, BA**

el65@uw.edu

Pravetoni Research Lab

I am a Program Operations Specialist in the Pravetoni Research Lab, located at Harborview Medical Center, in the Research and Training Building. Before joining the UW, I worked at Amazon for seven years. I was the executive assistant to the head of the Data Center Organization within AWS, where I provided administrative support for my VP and managed business rhythms and operations for my team.



### **Lostutter, Ty, PhD**

tylost@uw.edu

Center for the Study of Health and Risk Behaviors, Director, UW School of Medicine's Psychology Internship Program

Ty W. Lostutter, PhD is a national expert in the etiology, prevention and treatment of addictive behaviors and mental health. He currently is an Associate Professor in the Department of Psychiatry and Behavioral Sciences at the University of Washington (UW) where he has developed expertise in gambling disorder, college student drinking, and psych-oncology. Dr. Lostutter is the Director of the UW School of Medicine's Psychology Internship Program, conduct research via the Center of the Study of Health & Risk Behaviors (CSHRB) and is an Attending Psychologist at Fred Hutchinson Cancer Center.

### **Lyles-Riebli, Rose**

analyles@uw.edu

CSHRB



### **Mackey, Chelsea, MS**

mackeycd@uw.edu

Department of Psychology Center for the Study of Health and Risk Behaviors

I am a PhD candidate in the clinical psychology program at UW. My research interests focus on (1) understanding the etiology of and treatment approaches for race-related disparities for alcohol and substance use and (2) understanding the disproportionate impact of systemic and structural barriers on health disparities among minoritized populations.



### **Magarati, Maya, PhD**

magarati@uw.edu

Indigenous Magar (Nepal); Associate Director, Community Collaboration in Research, Seven

Directions Indigenous Public Health Institute; affiliate faculty with the UW Department of Sociology, and the Center for Studies in Demography and Ecology

Maya Magarati, PhD is a Research Assistant Professor in the UW Department of Psychiatry and Behavioral Sciences and serves as a core faculty in Seven Directions, A Center for Indigenous Public Health, a part of the Center for the Study of Health and Risk Behaviors in the Department. She serves as the Project Lead on the Tribal Opioid Overdose Prevention project. Maya investigates sexual health, community engagement, global Indigenous environmental and behavioral health specifically tied to ecological trauma,

resilience and traditional ecological knowledge, and immigrant and refugee cancer and wellbeing.

**Magnani, Jennifer, MSW, LICSW**

Psychiatry Consultation Line



**Manskopf, Inga**

imansk@uw.edu  
Addictions, Drug & Alcohol Institute (ADAI)

Inga Manskopf is the Director of Program Operations for ADAI. She leads strategic planning and provides oversight and direction of the various ADAI programs and projects. She works with faculty and staff to maintain the fiscal and functional health of ADAI. Inga has worked for UW since 2014 and worked for the Department of Pediatrics and the Department of Medicine prior to joining ADAI. For 8 years prior to joining UW, Inga worked for Seattle Children's Hospital coordinating a community-based, adolescent substance use prevention coalition in NE Seattle.



**Martinez, Griselda, PhD**

gm212@uw.edu  
Center for the Study of Health and Risk Behaviors, Department of Psychiatry and Behavioral Sciences, School of Medicine

Dr. Martinez is a postdoctoral scholar with research interests in the etiology of and prevention and interventions efforts for substance use and mental health problems across adolescence and young adulthood. She is interested in studying these processes among ethnically and racially diverse populations, with a focus on Latinx immigrant populations.

**McCauley, Elizabeth, PhD**

CSPAR



**McCann, Barbara, PhD**

mccann@uw.edu  
Harborview Medical Center, Sleep Medicine

Dr. McCann treats individuals with depression, anxiety, functional seizure disorder, and insomnia. She enjoys teaching psychiatry residents and fellows and has received numerous teaching awards. She has published over 60 journal articles and book chapters. Dr. McCann is President of the Society for Clinical and Experimental Hypnosis.

**MacDonald, Meg**

mmacdo@uw.edu  
CSHRB

**McCue, Tracey**

garciat@uw.edu  
CSHRB



**McGraw, Erin, BFA**

ecmcgraw@uw.edu  
Addictions, Drug & Alcohol Institute

Erinn joined ADAI in 2017. Her work as part

of the Information Services team uses graphic design, videography, instructional design, and other forms of information dissemination to engage the public in health topics related to substance use treatment, recovery, harm reduction, and prevention.



**McGuire, Annie, MS, LMHC, MHA**

amcguir8@gmail.com  
AIMS Center

Annie has 20 years of experience working in behavioral health, with 10 of those years spent in integrated care settings. Annie is now working at the University of Washington AIMS Center as a Clinical Trainer and Practice Coach. She has experience with training and implementation of evidence-based models including Collaborative Care and SBIRT, as well as various therapeutic interventions including Problem-Solving Treatment and Behavioral Activation.



**Merrill, Joseph, MD, PMH**

joem@uw.edu  
Program Director, UW Addiction Medicine Fellowship, Co-Medical Director, Harborview Office-Based Opioid Treatment Programs

Dr. Merrill is a Professor of Medicine at UWSOM with clinical, teaching, research, and administrative expertise in Addiction Medicine. He has collaborated extensively with multiple faculty in the UW Department of Psychiatry and Behavioral Sciences.



**Mettert, Kayne, PhD Student**

kayne@uw.edu  
Center for the Study of Health and Risk Behaviors Research Specialist: Kaiser

Permanente Washington Health Research Institute (KPWHRI)

Kayne Mettert is a graduate student in clinical psychology specializing in alcohol and drug use intervention and implementation science. His focus is on optimizing evidence-based interventions, addressing barriers to implementation, and increasing access to treatments across diverse populations.

**Moore, Michael**

michamoo@uw.edu  
Harborview Addiction Consult Service



**Neumann, Liza**

eliz0030@uw.edu  
Certified Peer Support Specialist, Public Health-care Worker, Office Based Opioid Treatment Services Addiction Medicine Services

I enjoy helping others, camping, and anything nature. God, family, and those I help are the things that push me to do and be better every day. I would not trade any of the trauma I've survived over the years because it's made me who I am today. A strong, caring and compassionate woman.

**Newman, Mark, MD**

mwnewman@uw.edu  
Integrated Care Training Program

**Nugent, Mandi, BA**

nugenm2@uw.edu

Mandi Nugent is the Program Assistant for the Northwest Addiction Technology Transfer Center (ATTC) and UW Center for Advancing Addiction Health Services (CAAHS).

Mandi graduated from University of Washington-Tacoma with a BA in Ethnic, Gender, and Labor studies. She previously provided administrative and program support for a prominent non-profit housing and homelessness resource organization in Seattle.

**O'Connell, Bill, EdD, LMHC, NCC**

woconn@uw.edu

Integrated Care Training Program

Dr. Bill O'Connell is an Associate Professor and Director of the Behavioral Health Support Specialist (BHSS) Clinical Training Program, a Ballmer Group funded workforce development project under the leadership of Dr. Anna Ratzliff. Bill has 35 years of experience working in addictions, mental health, criminal justice, counselor education and integrated care.

**Oré, Christina, MPH, DrPH**

core1@uw.edu

Seven Directions, A Center for Indigenous Public Health, Center for the Study of Health and Risk Behaviors & Dept of Health Systems and Population Health, UW School of Public Health

Dr Oré is an assistant professor at CSHRB and associate director of Indigenous systems alignment and data stewardship at Seven Directions. She is engaged in implementation, translational and relational sciences research and evaluation. Dr Oré supports global Indigenous research partnerships and is a member of the US Indigenous Data Sovereignty network.

**Ostherhage, Katie, MMS**

National Drug Abuse Treatment Clinical Trials Network (CTN)

**Otero, Stanton**

imua1965@gmail.com

Harborview Addiction Consult Service

**Owens, Mandy, PhD**

mandyo@uw.edu

Addictions, Drug & Alcohol Institute; Outpatient Psychiatry Clinic

Mandy Owens, PhD is an Assistant Professor whose work aims to improve services for people who use alcohol and drugs with a focus on those involved with the criminal legal system. She also is a clinical psychologist specializing in the treatment of substance use disorders.

**Palm-Cruz, Katherine, MD**

jkpc@uw.edu

Integrated Care Training Program

**Parker, Myra, JD, MPH, PhD**

myrap@uw.edu

Mandan and Hidatsa tribal affiliation; Director, Seven Directions Indigenous Public Health Institute; Associate Professor in the Department of Psychiatry

Myra is an enrolled member of the Mandan and Hidatsa tribes and serves as an Associate Professor in the Department of Psychiatry at the University of Washington School of Medicine. She is currently the Director of Seven Directions which is housed in the Center for the Study of Health and Risk Behaviors within the Department of Psychiatry.

**Payn, Betsy, MA, PMP**

bpayn@uw.edu

Integrated Care Training Program, AIMS Center

Ms. Payn is the Program Manager for the Integrated Care Training Program, overseeing numerous programs, including UW Psychiatric and Addictions Case Conference (UW PACC,) which is a free, weekly, tele- conference series. Sessions include both an educational presentation on an addictions or psychiatry topic and case conference.

**Petersky, Saul, AAC, BA, MSWc**

saul2@uw.edu

Addictions, Drug & Alcohol Institute (ADAI), Harborview Medical Respite, UW School of Social Work

I am a Research Study Coordinator at the Addictions, Drug & Alcohol Institute and a Master of Social Work candidate at UW. I was the project manager for the WA State Permanent Supportive Housing and Community Health Survey (188 participants), exploring substance use in these programs and healthcare access.

**Phillips, Paul, PhD**

Significant Opportunities in Addiction Research (UW-SOAR)

**Pravetoni, Marco, PhD**

mprave@uw.edu

Rick L. Seaver Endowed Professor of Psychiatry and Behavioral Sciences, University of Washington School of Medicine, and Director of a Center for Medication Development for Substance Use Disorders and Overdose.

Prior to joining the University of Washington, Marco was a Tenured Associate Professor of Pharmacology at the University of Minnesota Medical School in Minneapolis, MN. He earned a PhD in Pharmacology from the University of Minnesota in 2008. His NIH-funded research program focuses on the pre-clinical and clinical development of vaccines, monoclonal antibodies, and small molecules to treat opioid use disorders and reduce fatal overdoses. Other interests include biologics targeting chemical and biological threats.

**Pruit, Larry, PhD**

CSPAR



**Radin, Sandra, PhD**

National Drug Abuse Treatment Clinical Trials Network (CTN)

**Ramirez, Jason**

jjramirz@uw.edu  
CSHRB

**Ratzliff, Anna, MD, PhD**

annar22@uw.edu  
Co-Director, University of Washington AIMS Center, Director, UW Integrated Care Training Program, PI, Behavioral Health Support Program

Dr. Anna Ratzliff is a psychiatrist, Professor and Vice Chair of Faculty Development in the Department of Psychiatry and Behavioral Sciences. She is a national expert on the Collaborative Care Model, served as an MPI on the CHAMP study and has expertise in behavioral health workforce development.

**Raue, Patrick, PhD**

praue@uw.edu  
AIMS Center, Creativ Lab, ALACRITY Center

Patrick J. Raue, PhD is Professor and Associate Director for Evidence-Based Psychosocial Interventions at the AIMS Center. He conducts NIMH-supported research on training lay health providers in behavioral interventions; digital mental health interventions; patient preferences and shared decision-making approaches for depression; and the effectiveness of psychotherapy for older adults.

**Reger, Mark, PhD, ABPP**

CSPAR

**Rhew, Isaac, PhD, MPH**

rhew@uw.edu  
UW Department of Psychiatry and Behavioral Sciences; UW Center for the Study of Health and Risk Behaviors; Adjunct, UW Department of Epidemiology

I am interested, broadly, in the etiology and prevention of unhealthy substance use across multiple levels of influence--from individual-level factors (e.g., loneliness, depressive symptoms) up to area-level factors (e.g., local cannabis and alcohol retail outlet availability, neighborhood context).

**Ries, Richard, MD**

rries@uw.edu  
Director, Addiction Division; Medical Director, Center for Suicide Prevention and Recovery

(CSPAR)

Richard K. Ries, MD, is Professor of Psychiatry, and Director of the Addictions Division in the UW Department of Psychiatry and Behavioral Sciences at the University of Washington School of Medicine in Seattle, Washington. He is based at Harborview Medical Center and has worked clinically, administratively and in research with patients with various combinations of mental, addiction and suicidal conditions for many years. He is currently

involved in several grants from NIDA, SAMHSA, NIMH, and the Garvey Institute for Brain Health Solutions around Suicide and other co-occurring mental and addictions disorders. He has been senior editor of the key reference text: Principles of Addiction Medicine (editions IV and V, published by the American Society of Addiction Medicine, and a noted expert in the fields of addictions, suicide, and severe mental illnesses. He has been voted as one of the Best Doctors in America and Best Doctors in Seattle numerous times.

**Rice, Eric**

erice81@uw.edu  
Harborview Addiction Consult Service

**Royal, Jordan, MSW, LICSW**

kjor300@uw.edu  
Center for Novel Therapeutics in Addiction Psychiatry

Jordan Royal is the Lead Mental Health Practitioner for the Center for Novel Therapeutics in Addiction Psychiatry. She is a nationally certified trainer and consultant of Cognitive Processing Therapy and has significant experience in the child welfare and clinical social work field. Jordan is passionate about providing effective treatments to people who have experienced trauma and are struggling with substance use disorders.

**Salisbury, Juliann, MSW, LSWAA**

CSPAR

**Sargent, Christina**

sargec2@uw.edu  
Center for Novel Therapeutics in Addiction Psychiatry (NTAP)

Christina is a Research Coordinator at the Center for Novel Therapeutics in Addiction Psychiatry. She brings experience overseeing and executing clinical trials and is passionate about making psychiatric care accessible. She has a degree in Biology & Psychology from Seattle University and is currently completing UW-Madison's Psychoactive Pharmaceutical Investigation Program.

**Saxon, Andrew, MD**

asaxon@uw.edu  
Professor Emeritus, Department of Psychiatry and Behavioral Sciences, University of

Washington School of Medicine Affiliate, Center of Excellence in Substance Addiction Treatment and Education, VA Puget Sound Health Care System

Dr. Saxon's current research work is supported by the VA and the National Institute on Drug Abuse and involves pharmacotherapies and psychotherapies for alcohol, tobacco, and opioid use disorders, work in co-occurrence of substance use disorders and posttraumatic stress disorder, phenomenology and epidemiology of cannabis use, and treatment of substance use in primary care.

**Schindler, Abbie, PhD**

aschind@uw.edu  
Psychology Training in Alcohol Research (UW PTAR); Neurobiology of Addiction, Pain, and

Emotion (UW NAPE); Center for Microbial Interactions and Microbiome Center (UW mim\_c)

I am interested in traumatic stress and its comorbidities (e.g. affective disorders, substance use, metabolic dysfunction, neurodegeneration). Using an iterative translation approach, we utilize both human and animal populations and focus on reciprocal connections between the brain and peripheral organs (e.g. liver, gut, lymph) in order to understand adverse outcomes of traumatic stress from a systems biology standpoint.

**Shah, Vyoma**  
vyomas@uw.edu  
CSHRB

**Simler, Angela**  
asimler@uw.edu  
CSHRB



**Simpson, Tracy, PhD**  
Tracy.Simpson@va.gov  
Center of Excellence in Substance Addiction Treatment and Education, VA Puget Sound Healthcare System; Mental Illness Research, Education and Clinical Center, VA Puget Sound Healthcare System

Dr. Tracy Simpson is a Professor of Psychiatry and Behavioral Sciences at the University of Washington and a Senior Investigator and Educator at the VA Puget Sound Healthcare System. Her research primarily focuses on the intersection of trauma, PTSD, and substance use disorders. She also has strong interests in women's addiction and co-occurring mental health challenges.



**Sladky, Mandy, MSN, RN, CARN**  
sladkym@uw.edu  
Center for Community-Engaged Drug Education, Epidemiology, and Research

Mandy Sladky is a nurse specialist in SUD and works as a Clinical Project Manager with ADAI's CEDEER team. Her work includes supporting the development, implementation, and evaluation of clinical programs related to substance use, overdose, medications for opioid use disorder (MOUD), and harm reduction. Mandy also acts as CEDEER's clinical consultant for Public Health-Seattle & King County's Overdose Prevention and Response team, and was formerly a Public Health Nurse at King County's low barrier MOUD clinic, Pathways, in downtown Seattle. Her commitment to delivering dignified, respectful, and quality healthcare to all is evident in her approach to destigmatizing SUD and enhancing services for individuals who use drugs and those with intersecting marginalized identities.

**Smith, Annelise**  
smithan@uw.edu  
CSHRB

**Smith, Hayden**  
hsmith18@uw.edu  
CSHRB

**Solano, Esther**  
UW Psychiatry and Addiction Case Conference

**Stephens, Kari, PhD**  
kstephen@uw.edu  
National Drug Abuse Treatment Clinical Trials Network (CTN), Integrated Care Training Program



**Stoner, Susan, PhD**  
sastoner@uw.edu  
Addictions, Drug & Alcohol Institute, Fetal Alcohol & Drug Unit, Parent-Child Assistance Program

Dr. Stoner completed her B.A. in psychology at Johns Hopkins University and Ph.D. in clinical psychology at UW. Since 2020, she has been director of the Washington Parent-Child Assistance Program. In 2022, she was named Ann Streissguth Ph.D. Professor of Fetal Alcohol Spectrum Disorders. She is a Washington-licensed psychologist.



**Stuvek, Brenda, BS**  
bkhurley@uw.edu  
Addictions, Drug & Alcohol Institute (ADAI), within that the Clinical Trials Network (CTN) and the Clinical Trials Consultation and Technical Assistance Program (C-TAP).

Over 20 years' experience with research administration of federally funded, multisite studies in community settings to address issues for people who use substances. This work includes collaborating with a wide array of organizations, crafting/implementing study budgets, and supporting dissemination of results.

**Sung, Jeffrey, MD**  
CSPAR

**Tamru, Elsa**  
tamru@uw.edu  
Harborview Addiction Consult Service



**Terry, Garth, MD, PhD**  
geterry@uw.edu  
Assistant Professor, Department of Psychiatry & Behavioral Sciences, UWSOM Assistant Professor, Department of Radiology, UWSOM Co-Director - PET Radiotracer Laboratory, VA Puget Sound Health Care System

Dr. Terry's areas of research focus include radioligand development for positron emission tomography (PET) brain imaging (including targets for understanding and treating addiction), cannabis use disorder (CUD), and cannabinoid pharmacology. He is principal investigator on the Addictions, Drug, and Alcohol Institute funded pilot study examining feasibility of prazosin for CUD.



**Thompson, Mia, BA**  
miat859@uw.edu  
Center for the Study of Health and Risk Behaviors (CSHRB)

Mia graduated from UW in 2023. She is the project coordinator for the HEY Study, the YEAH Study, the IRIS

Study, and the ASSIST Study. Her current research interests surround PTSD and trauma-related psychopathology.

**Toor, Ramanpreet, MD**

rtoor@uw.edu

Population Mental Health Fellowship, Community Based Fellowship, UW Primary Care Clinics

I am working as a psychiatric consultant for the UW's Behavioral Health Integration Program in UW primary care clinics, and is also a psychiatric consultant for WA perinatal consultant line. She is the program director of the Population Mental Health and Integrated Care fellowship (Integrated Care Training Program).



**Towle, Cara, MSN, RN, MA**

ctowle@uw.edu

Behavioral Health Institute, HMC, UW Psychiatry & Addictions ECHO, Traumatic Brain Injury - Behavioral Health ECHO

Cara Towle is the interim Program Director for the Training Workforce and Policy Center at the Harborview Behavioral Health Institute, and has devoted her work to facilitating clinical telehealth services and educational programs, primarily in behavioral health, including UW Telehealth, UW PACC, TBI-BH ECHO, UW TelePain and Pain & Opioid Provider Consult Hotline.

**Tristao, Ty**

tt88@uw.edu

The Center for the Study of Health and Risk Behaviors, Trauma Recovery Innovations (TRI), Project Better



**Tsui, Judith, MD, MHP**

tsuij@uw.edu

National Drug Abuse Treatment Clinical Trials Network (CTN)

Judith is a primary care and Addiction Medicine trained physician who has cared for persons who use drugs for more than two decades working in primary care office and community-based opioid treatment programs. As a researcher, Dr. Tsui currently conducts NIH-funded clinical and health services research to improve care and outcomes for persons who use drugs, focusing on medications and innovative care delivery models to treat and prevent substance use disorders and related comorbidities (hepatitis C and HIV).



**Unützer, Jürgen, MD, MPH, MA**

unutzer@uw.edu

Department of Psychiatry and Behavioral Sciences, Garvey Institute for Brain Health Solutions

Dr. Unützer's work focuses on the integration of mental health services and general medical care and on translating research on evidence-based mental health interventions into effective clinical and public health practice. He chairs the Department of Psychiatry and Behavioral Sciences and directs the Garvey Institute for Brain Health Solutions.

**Tu, Alison**

alison@uw.edu

CSHRB

**Van Pelt, Marina**

mvanpelt@uw.edu

CSHRB



**Veith, David, MD**

Acting Assistant Professor, UW Department of Psychiatry and Behavioral Sciences Addiction Psychiatrist, VA Puget Sound Addiction Consult

Service

**Walter, Theresa**

BASICS Innovations Group

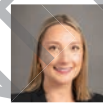


**Walton, Thomas, PhD, MSW**

towalton@uw.edu

Center for the Study of Health and Risk Behaviors

I am an Acting Assistant Professor studying and developing brief interventions for alcohol use and associated conditions. My current focus is trauma and alcohol-related sexual risk behavior among men who have sex with men serving on active-duty in the US military.



**Walukevich-Dienst, Katherine, PhD**

kwd1@uw.edu

Center for the Study of Health Risk Behaviors, University of Washington

Dr. Walukevich-Dienst is a licensed clinical psychologist and an Assistant Professor at UW. Her research seeks to identify psychosocial and contextual factors associated with alcohol and cannabis misuse among young adults, including social influences, co-occurring mental health concerns, and high-risk use events and contexts, and leverage this information to develop technology-informed interventions.

**Weir, Steven, BA, MHP**

swweir@uw.edu

Harborview SBIRT/OBOT; HMHAS; Addiction Medicine Current inpatient SBIRT/Addiction Consult Service counselor. Previously MHP with Edward Thomas House Medical Respite Program.

A decade of experience in outpatient/outreach mental health, substance use, and housing services. Previous roles as Program Coordinator and Program Manager of Enhanced Shelter programs with Compass Housing Alliance.

**Whiteside, Lauren, MD, MS**

National Drug Abuse Treatment Clinical Trials Network (CTN)

**Whitfield, Jessica, MD, MPH**

jwhitfi@uw.edu

Integrated Care Training Program



**Wilhelmi, Lailai**  
asuncion@uw.edu  
Harborview Addiction Consult Service



**Williams, Jason, PhD**  
anjrw@u.washington.edu  
Addictions, Drug & Alcohol Institute Center for  
Community-Engaged Drug Education, Epidemi-  
ology and Research (CEDEER) and Cannabis Education &  
Research Program (CERP)

Jason R Williams is a social scientist who has been at ADAI for 10 years after previously doing research in child welfare and poverty. He specializes in quantitative data for epidemiology and evaluation, statistics, and data visualization.



**Williams-Gilbert, Wendy, PhD, RN,  
CARN**  
wendyjw@uw.edu  
ADAI CEDEER

Wendy is a registered nurse with extensive experience caring for patients in rural and underserved communities. Her work focuses on education, training and technical assistance in multiple clinical settings to provide evidence based care for patients with opioid use disorder. As nurse care manager she advocates for low barrier models of care to provide patient centered care while reducing stigma and bias in the inpatient clinical setting.

**Winstead, Teresa, PhD**  
twinstea@uw.edu

Senior Research Scientist with ADAI's Center for Community-Engaged Drug Education, Epidemiology and Research

Teresa Winstead (she/her), Ph.D., M.A. is a medical anthropologist and has been working in harm reduction research for over ten years, focusing on supporting the qualitative research design of projects focused on supporting health and wellbeing of people who are currently using drugs. Winstead earned her PhD and an MA from Indiana University, Bloomington, in cultural anthropology.



**Wright, Lynette, MSW**  
lmwright@uw.edu  
University of Washington Addictions, Drug and  
Alcohol Institute

Lynette Wright has worked at the Addictions, Drug & Alcohol Institute since 2010. Her work with the Clinical Trial Network of the National Institute on Drug Abuse has encompassed responsibilities as Project Director, Quality Assurance and Research Coordinator for studies evolving over the years utilizing medication and behavioral treatments.



**Youngberg, Kelly, MHA**  
ybergka@uw.edu  
Center for Community-Engaged Drug Education,  
Epidemiology and Research (CEDEER)  
Addictions, Drug & Alcohol Institute (ADAI) Department

of Psychiatry & Behavioral Sciences University of  
Washington, Seattle

**Yu, Jessica**  
jeyu22@uw.edu  
CSHRB

**Zheng, Ben**  
zhengb7@uw.edu  
CSHRB

PRE-REVIEW DRAFT

PRE-EVENT DRAFT



PRE-EVENT DRAFT